



WELL-BEING AND DEVELOPMENT POLICIES IN TUNISIA

Dr. Manel Khadraoui
Ministry of Development and International
Cooperation, Tunisia

Modernism/Post-modernism

- Modernism
 - Broad definition
 - Multidisciplinary character (art and related sciences like architecture, culture, literature, politics,
 - The economic upheaval of the late nineteenth century become the basis to argue for a radically different kind of art and thinking. Influential innovations included steam-powered industrialization, and especially the development of railways, starting in Britain in the 1830s, and the subsequent advancements in physics, engineering and architecture associated with this
 - Reviewing/rejecting the past/traditional way of thinking and doing
 - Development
 - Berman 1988: men and women the subjects as well as the objects of modernization
 - Berman 1988 a socially progressive trend of thought that affirms the power of human beings to create, improve and reshape their environment with the aid of practical experimentation, scientific knowledge, or technology.
- Postmodernism: sees the world is seen as a complex and uncertain place. Reality is no longer fixed or determined. All truth is relative to one's viewpoint or stance. The world is a representation

Well-being

- Modernism/Post-modernism
- Human being in the center of development
- Development model aiming to increase quality of life, happiness and well-being
- Measurement, monitoring, improvement
- There is no consensus about the measurement of well-being
 - Monetary approaches (GDP/h)
 - Subjective approach
 - Multi-dimensional approaches

Well-being

- Choice of variables
 - Literature review
 - Existing statistics (National Institute of Statistics and concerned ministries)
- Regional Development Index
- Well-being Index
- Continuing process of improvement of the index

Well-being Index

Population

Population characteristics

- Nber of houtholds
- Nber of housing units
- Density
- % annual increase

Quality of life

- % tap water access
- % electricity access
- % urbain sanitation
- % urbain population
- Net migration
- % male population

Access to education

- % of road coverage
- Distance to school > 3km
- % illiteracy
- % internet
- % water
- % electricity
- % access to primary school
- % schools hetergoneous sections
- % access to preparatory school
- % security fences
- Distance to school: 1-3 km

Education

Quality of education

- Pupils/ teacher (Prim ed)
- Pupils/ teacher (Sec ed)
- % Repeating a grade (Prim ed)
- % Repeating a grade (Sec ed)
- % School drop-out (Sec ed)
- % School drop-out (Prim ed)
- % Success in baccalaureate

Higher education

- Nber of universities
- Nber of academic home
- Nber of university restaurants

Social

Social activity

- Nber of associations / 1000h
- Nber of youth centers/ 1000h

Social vulnerability

- % poverty
- % Social transfers
- Rate of dependency
- Pharmacies/1000h
- Distance of access to regional hospital
- Mortality rate
- Distance of access to general hospital
- Birth rate
- Bed/ 1000h

Health

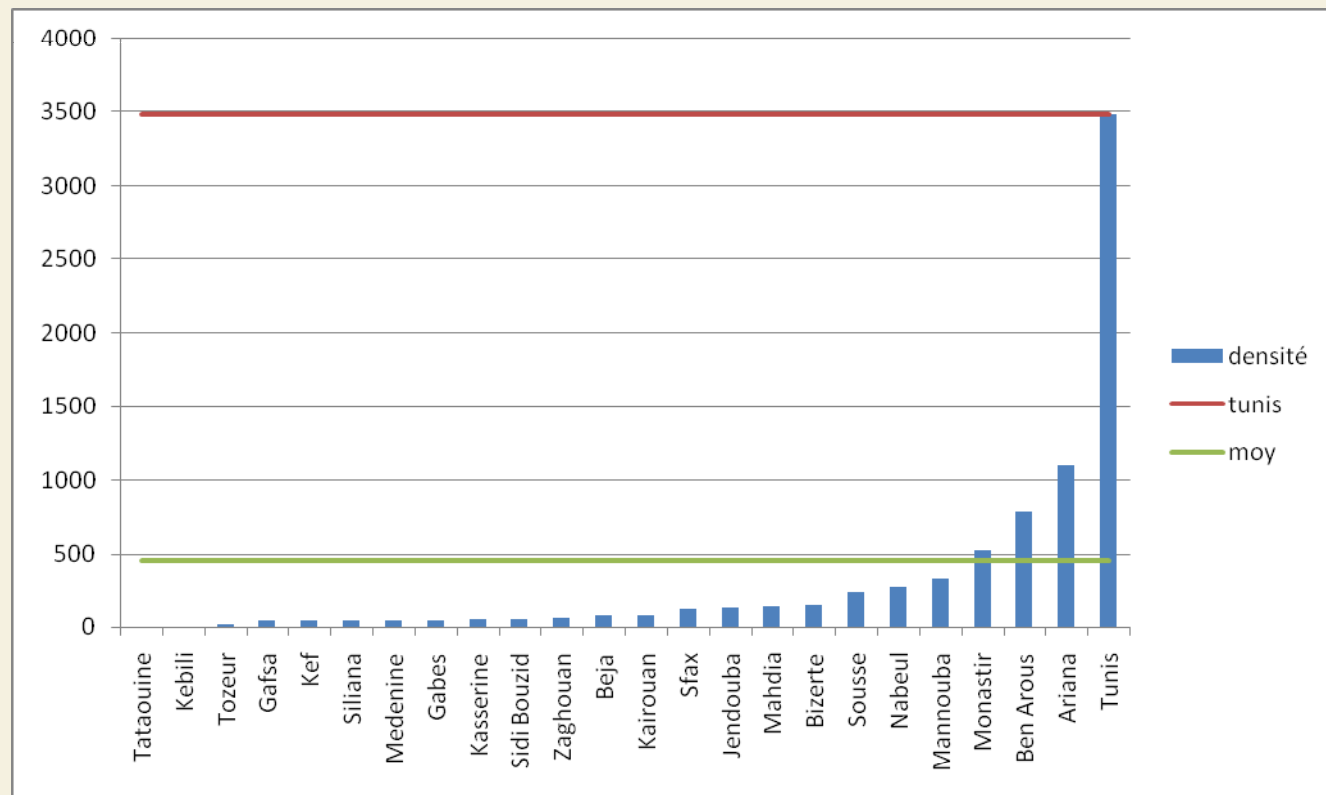
Economy

- Unemploy ment rate
- Women unemploy ment rate
- Nber of private entreprise/1 000h

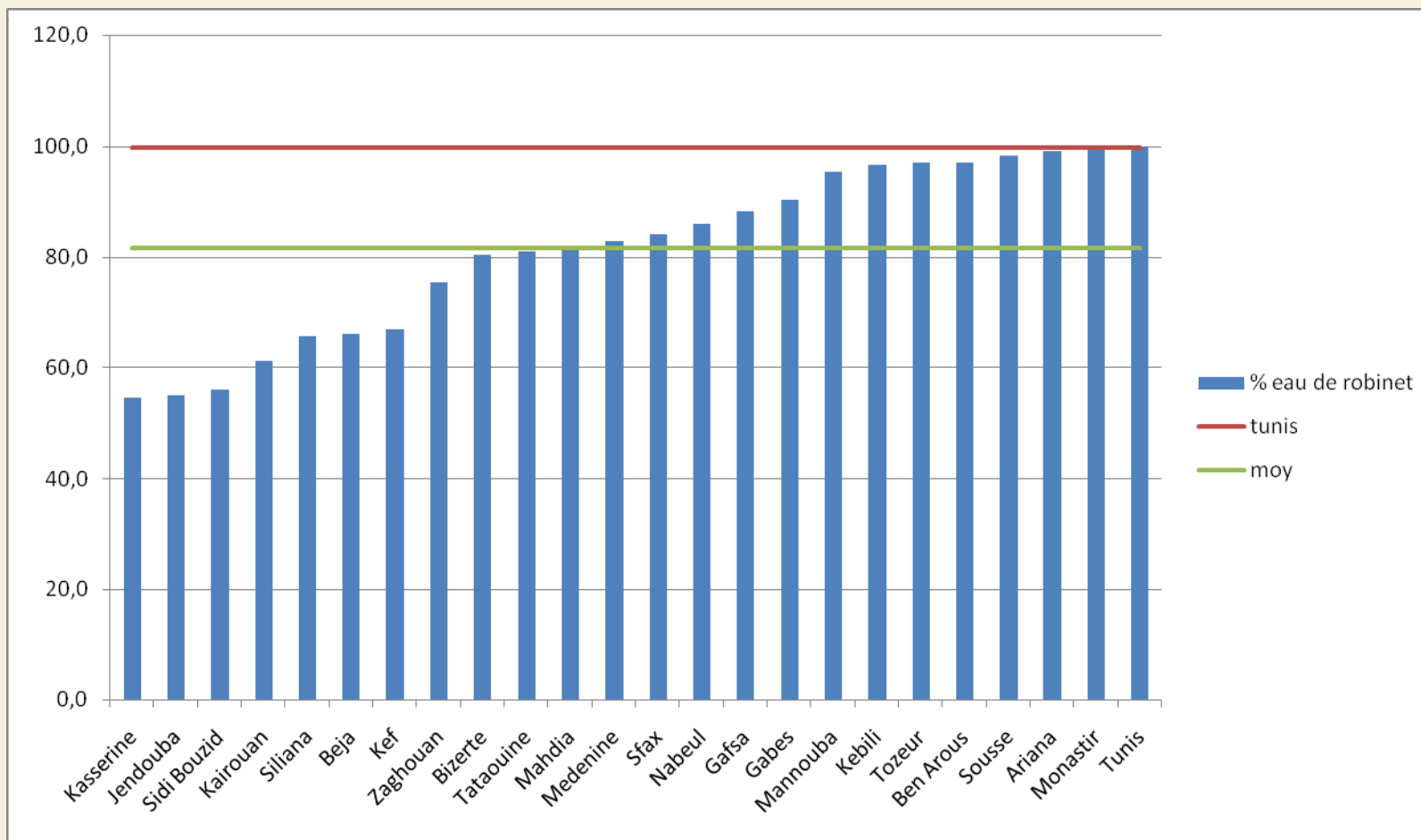
Well-Being Index (WBI)

	WBI	Rank
Tunis	1,00	1
Sousse	0,59	2
Monastir	0,57	3
Sfax	0,54	4
Ariana	0,48	5
Ben Arous	0,45	6
Nabeul	0,43	7
Bizerte	0,36	8
Mannouba	0,33	9
Mahdia	0,29	10
Medenine	0,25	11
Gabes	0,22	12
Kairouan	0,22	13
Beja	0,21	14
Jendouba	0,16	15
Gafsa	0,16	16
Tozeur	0,11	17
Sidi Bouzid	0,08	18
Kebili	0,08	19
Zaghouan	0,07	20
Siliana	0,06	21
Kef	0,06	22
Tataouine	0,01	23
Kasserine	0,00	24

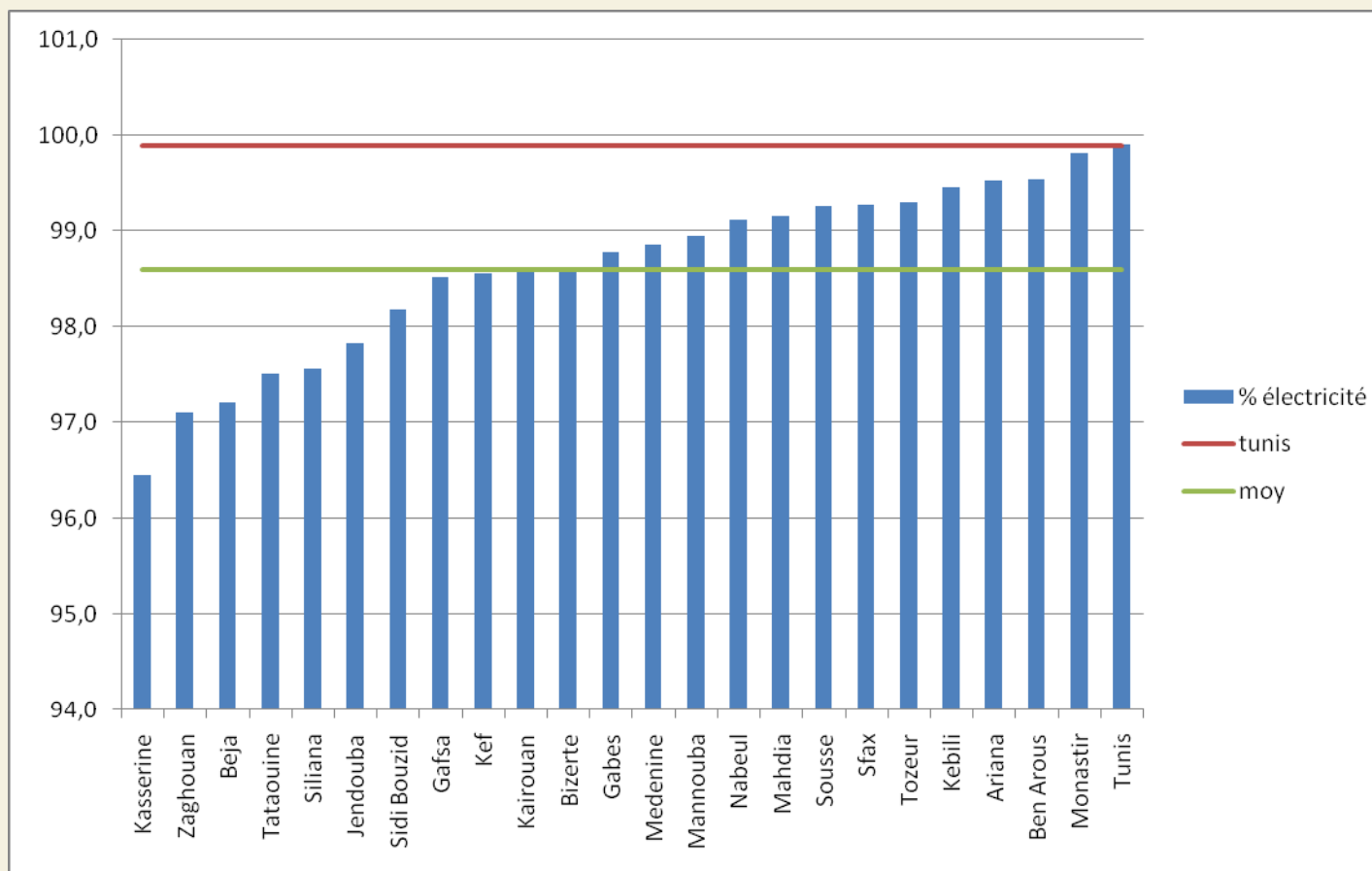
Density



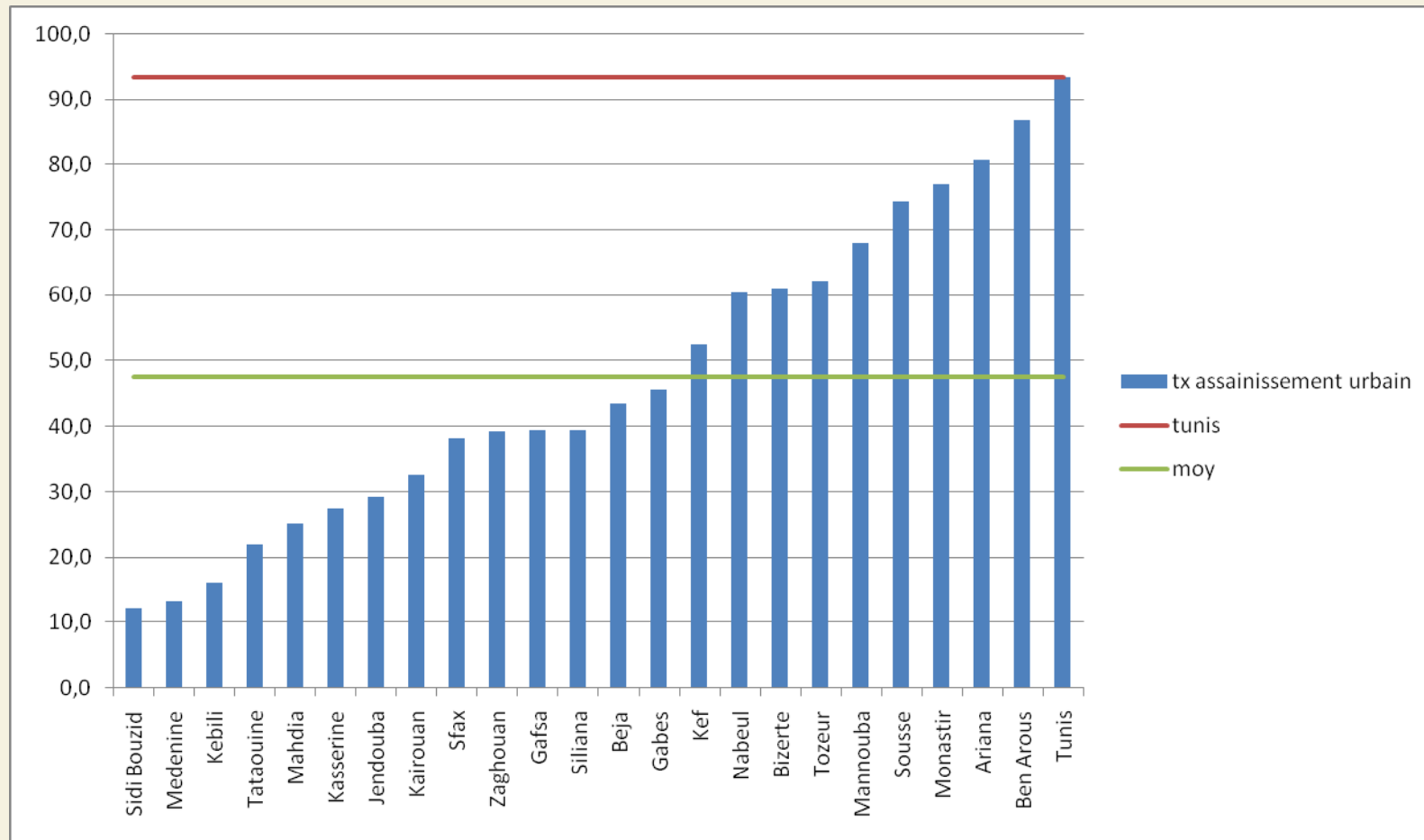
Access to tap water



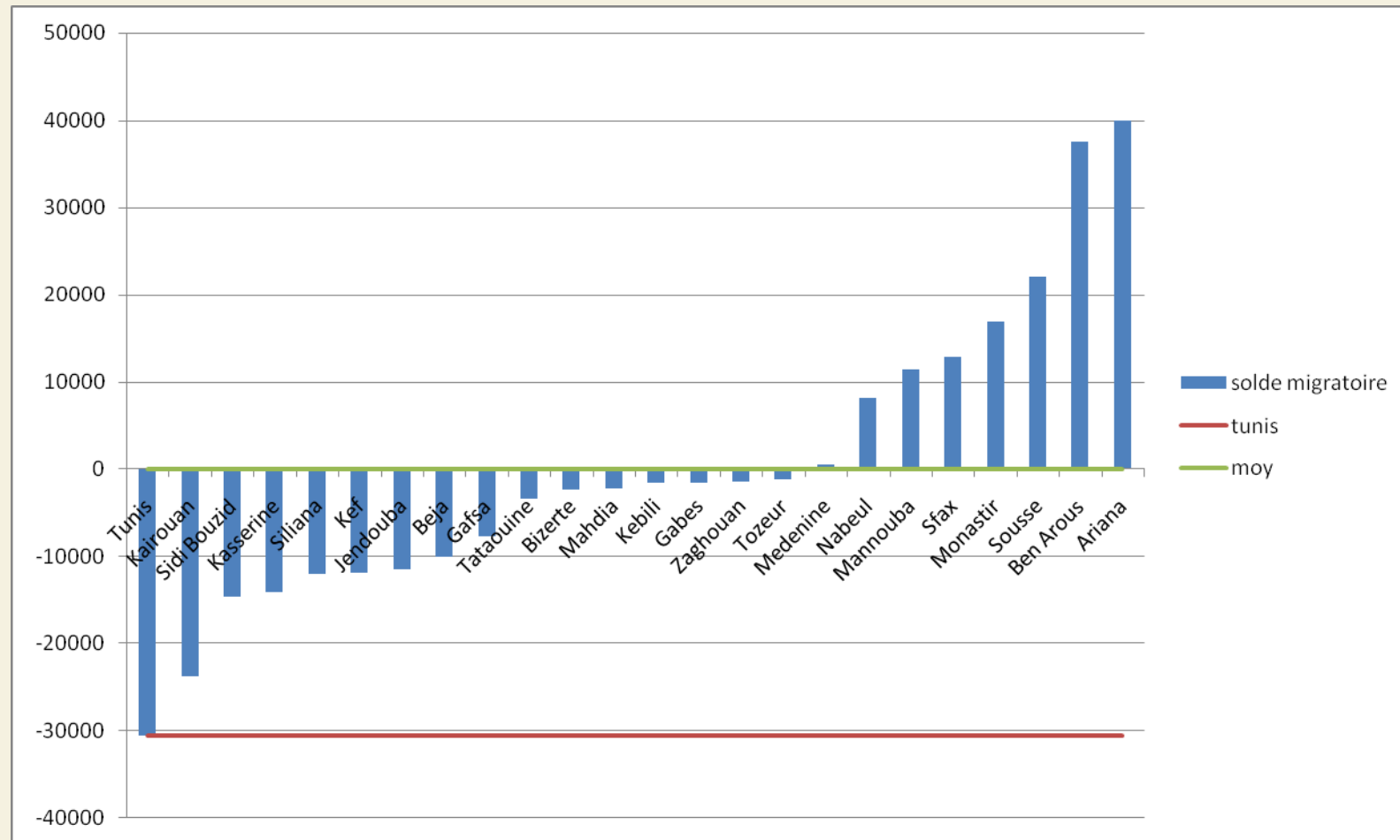
Electricity access



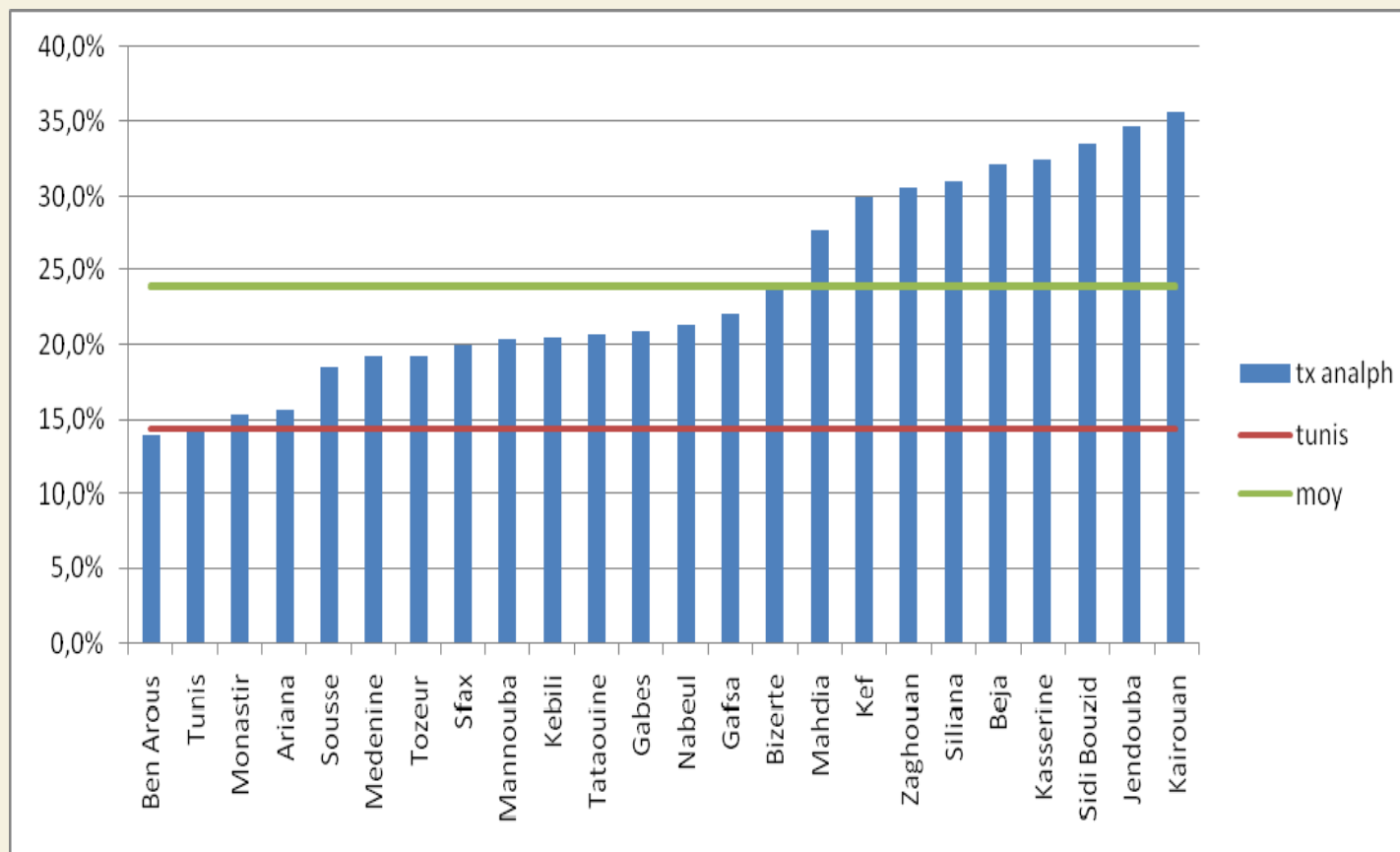
% Urbain sanitation



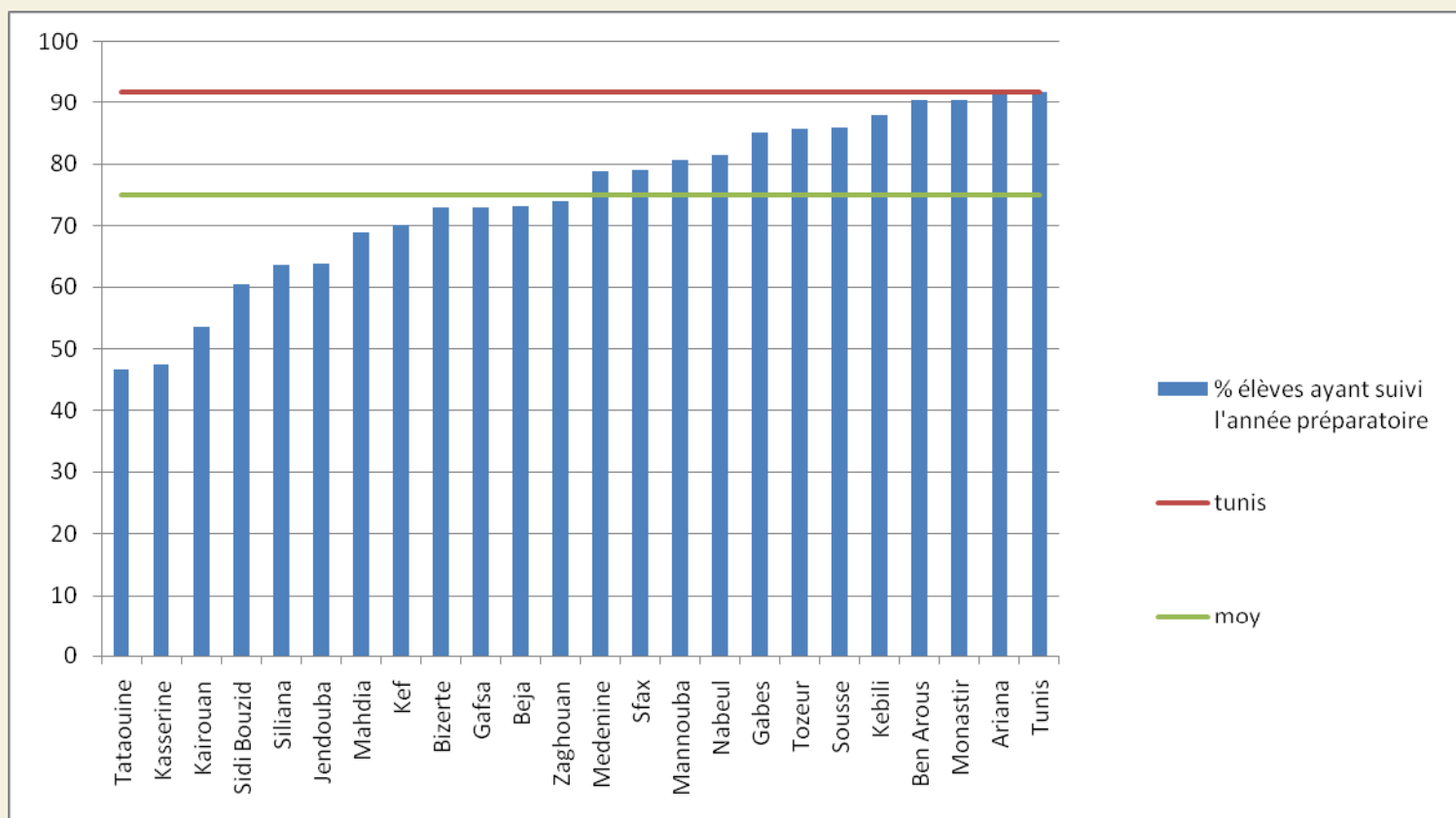
Net migration



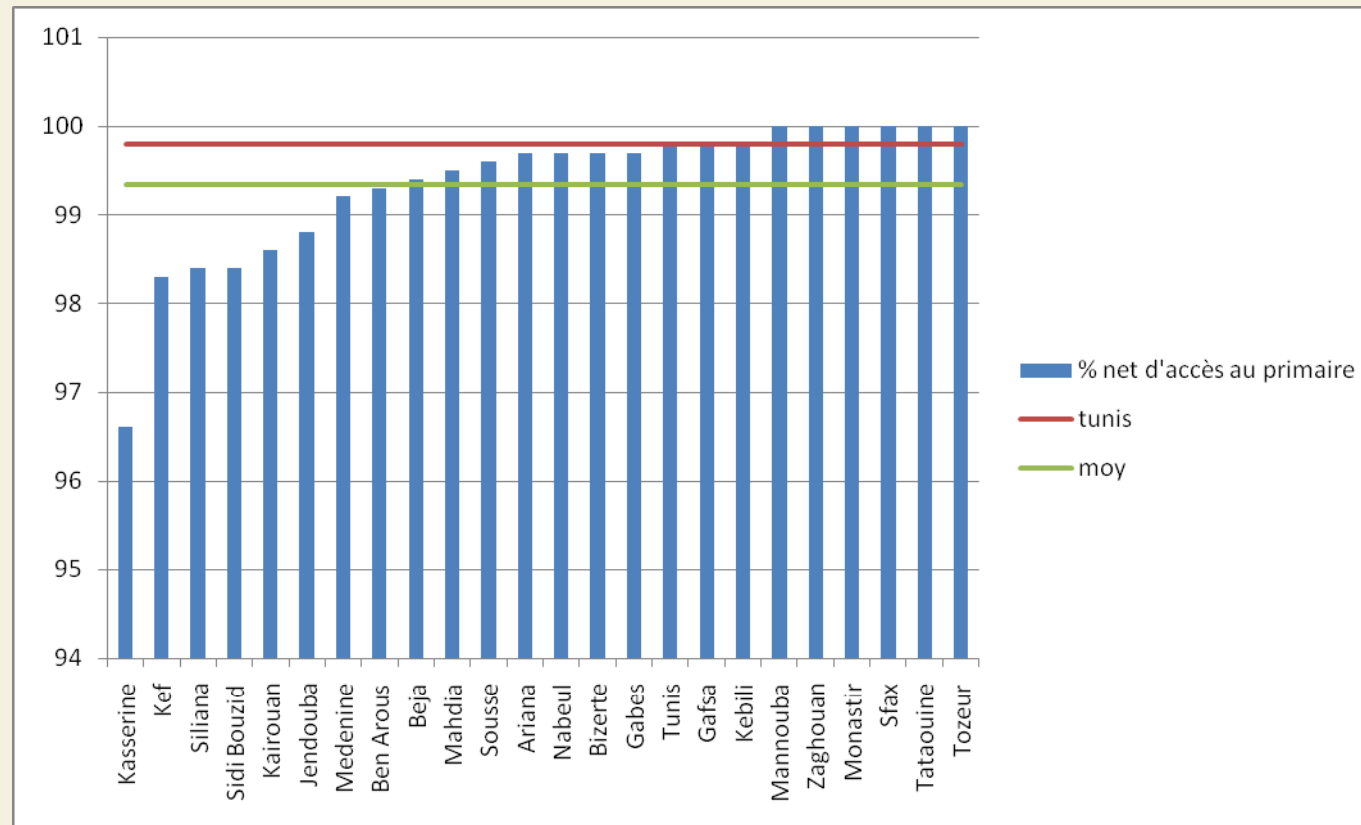
Illiteracy rate



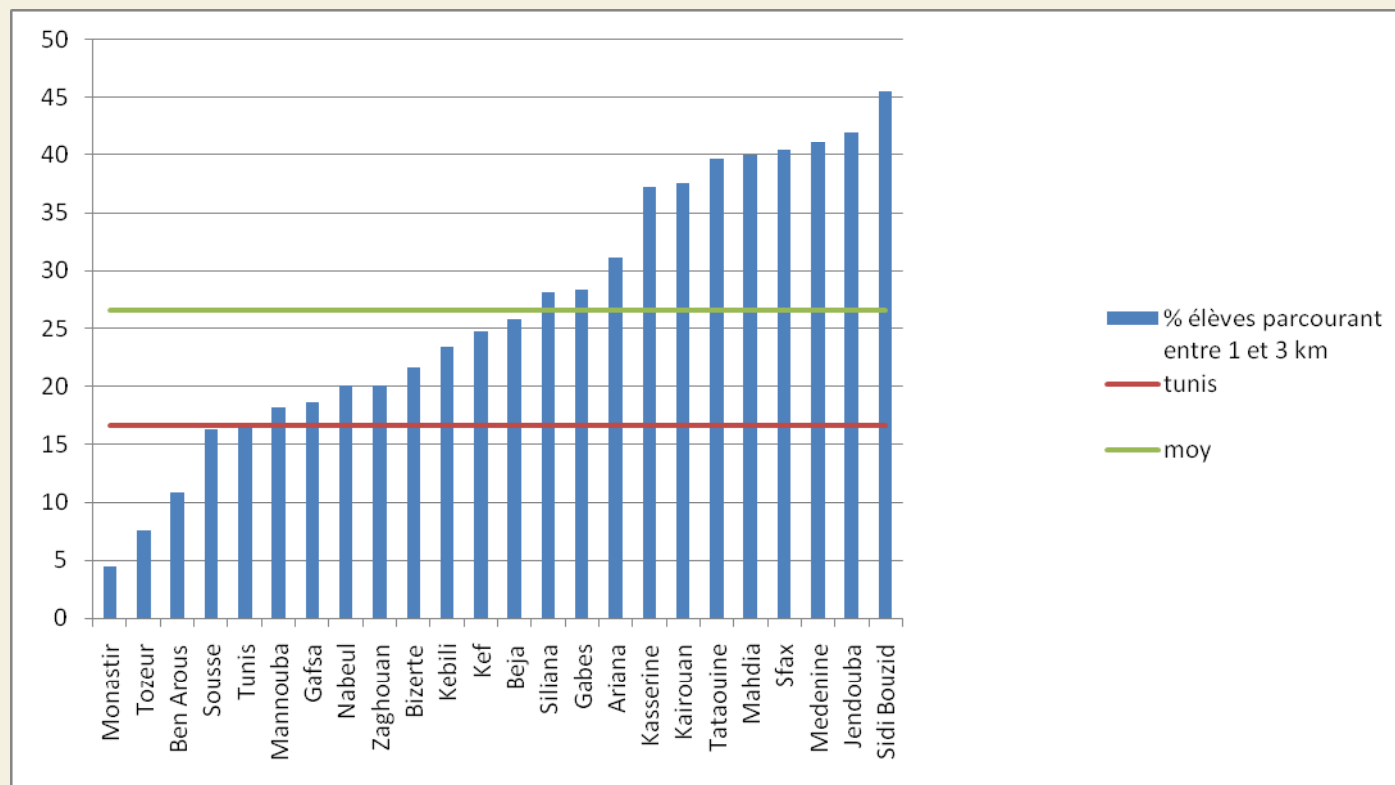
Access to preparatory school



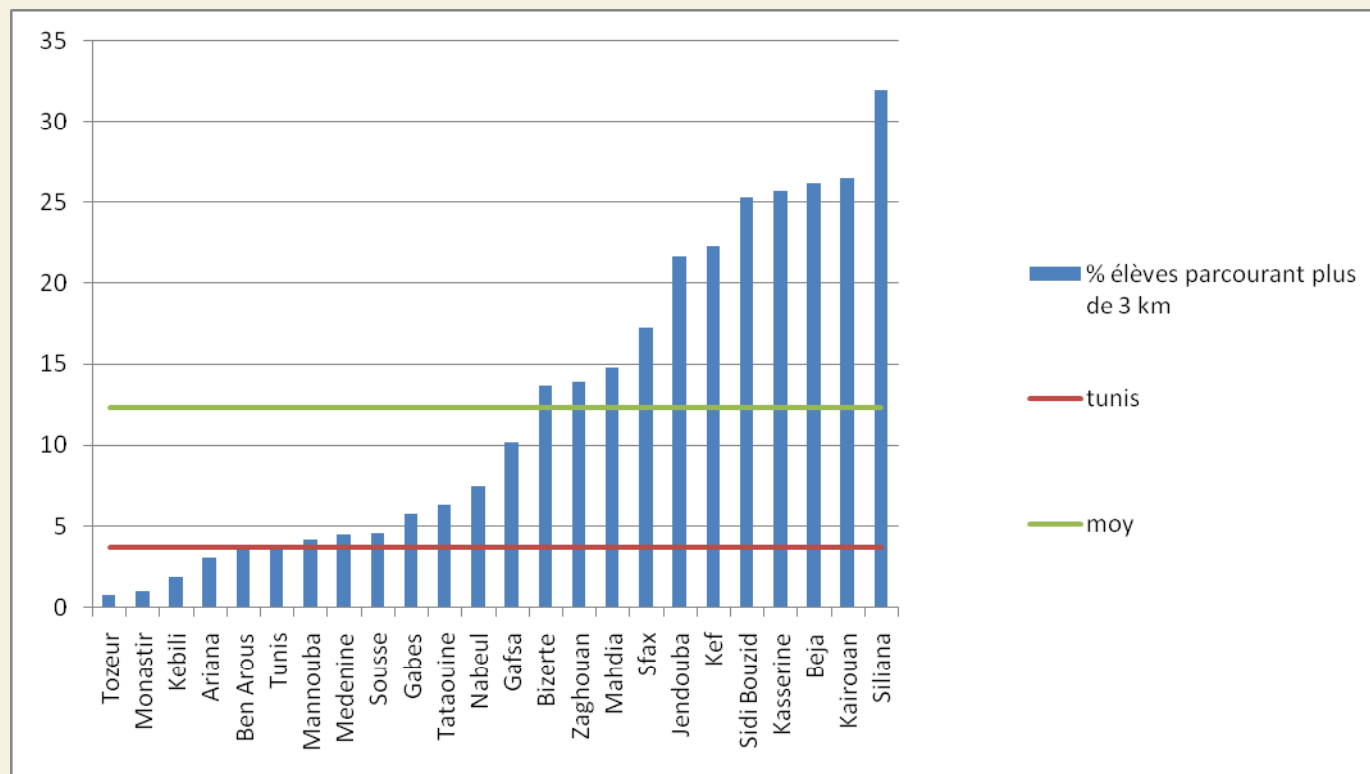
Access to primary school



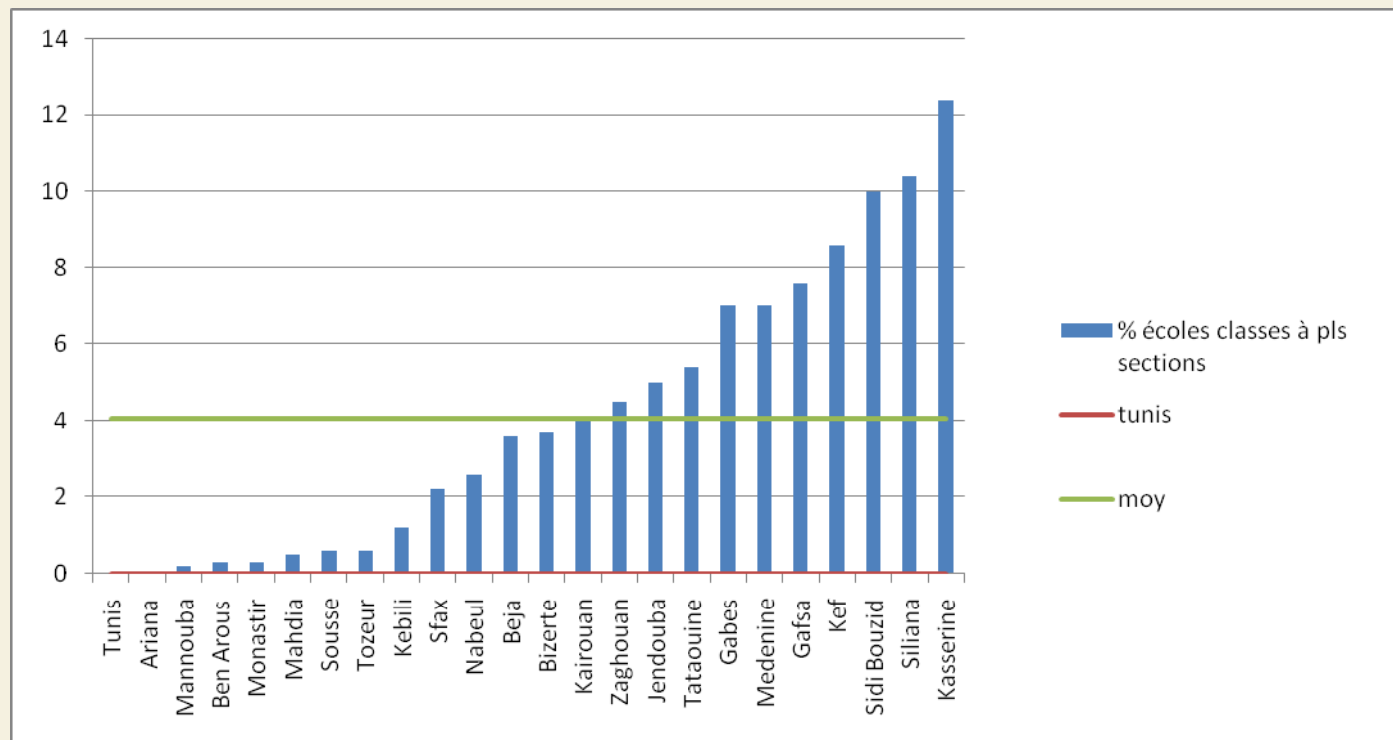
Distance to school 1-3km



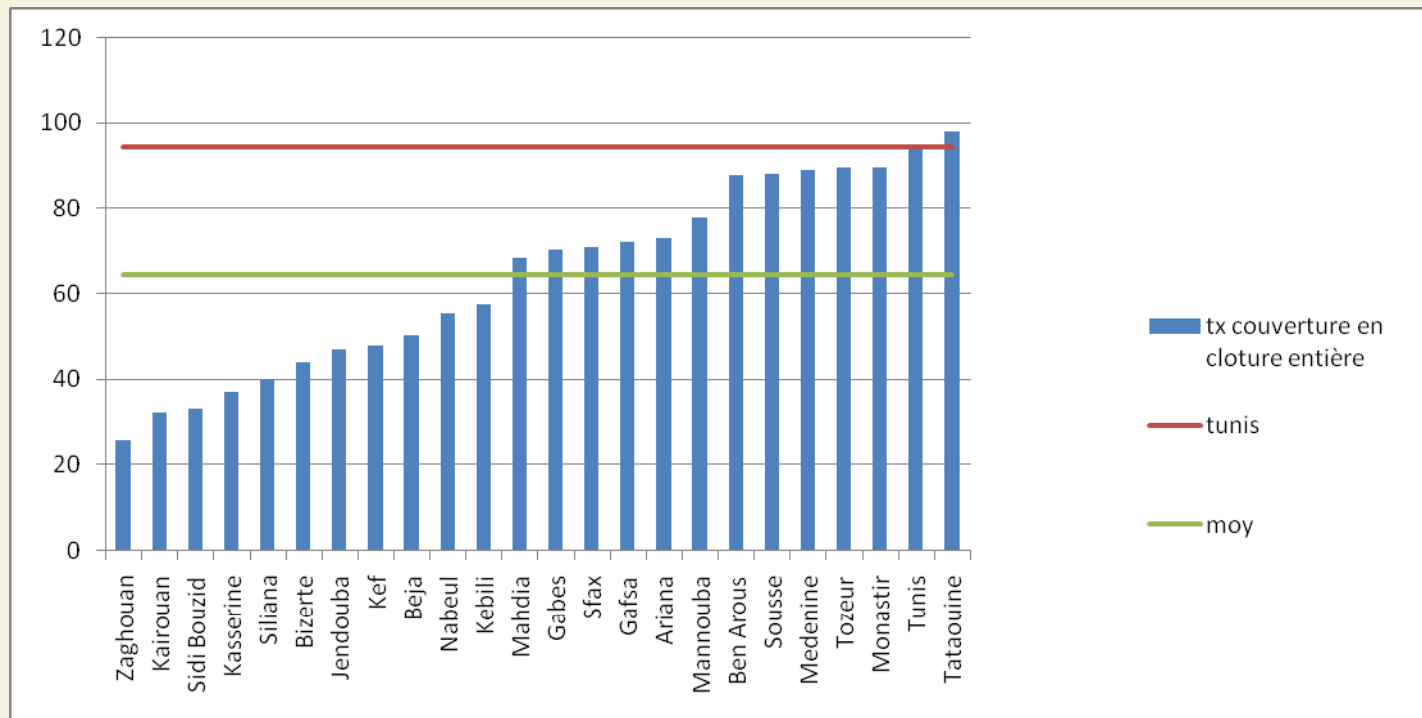
Distance to school >3km



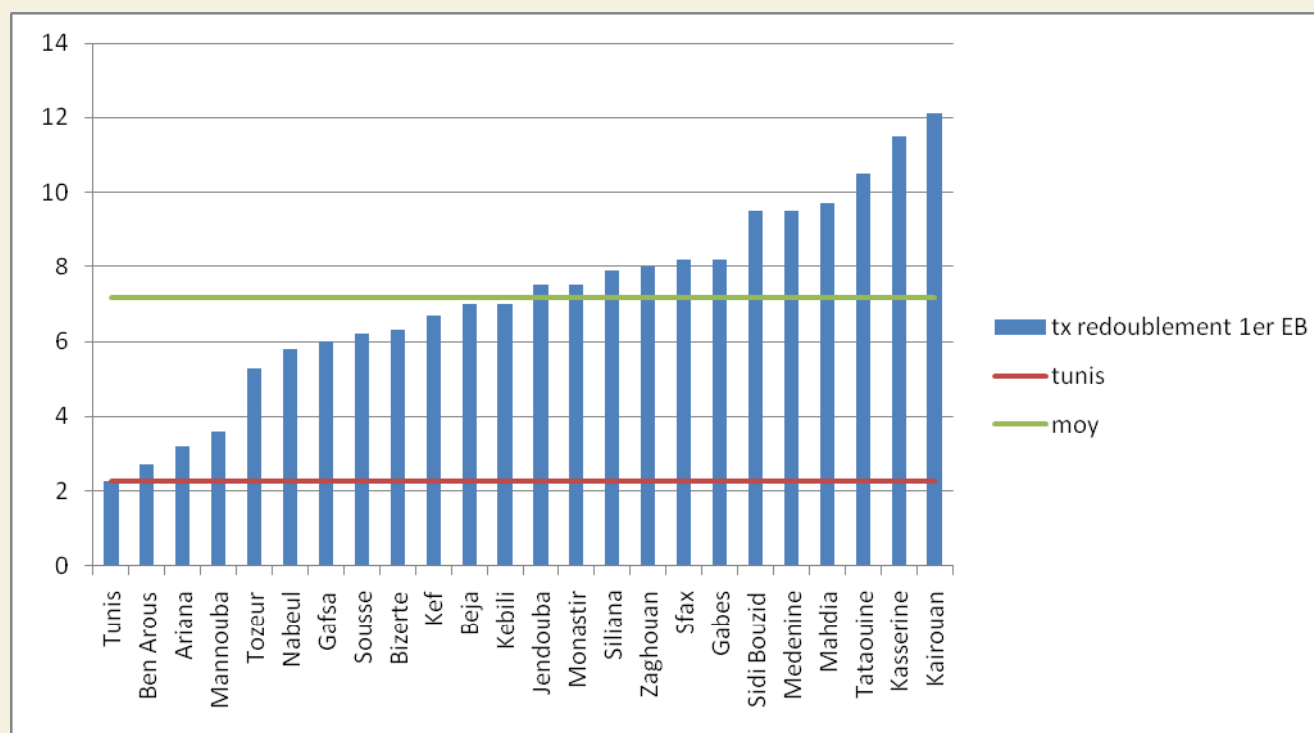
% Schools with heterogenous sections



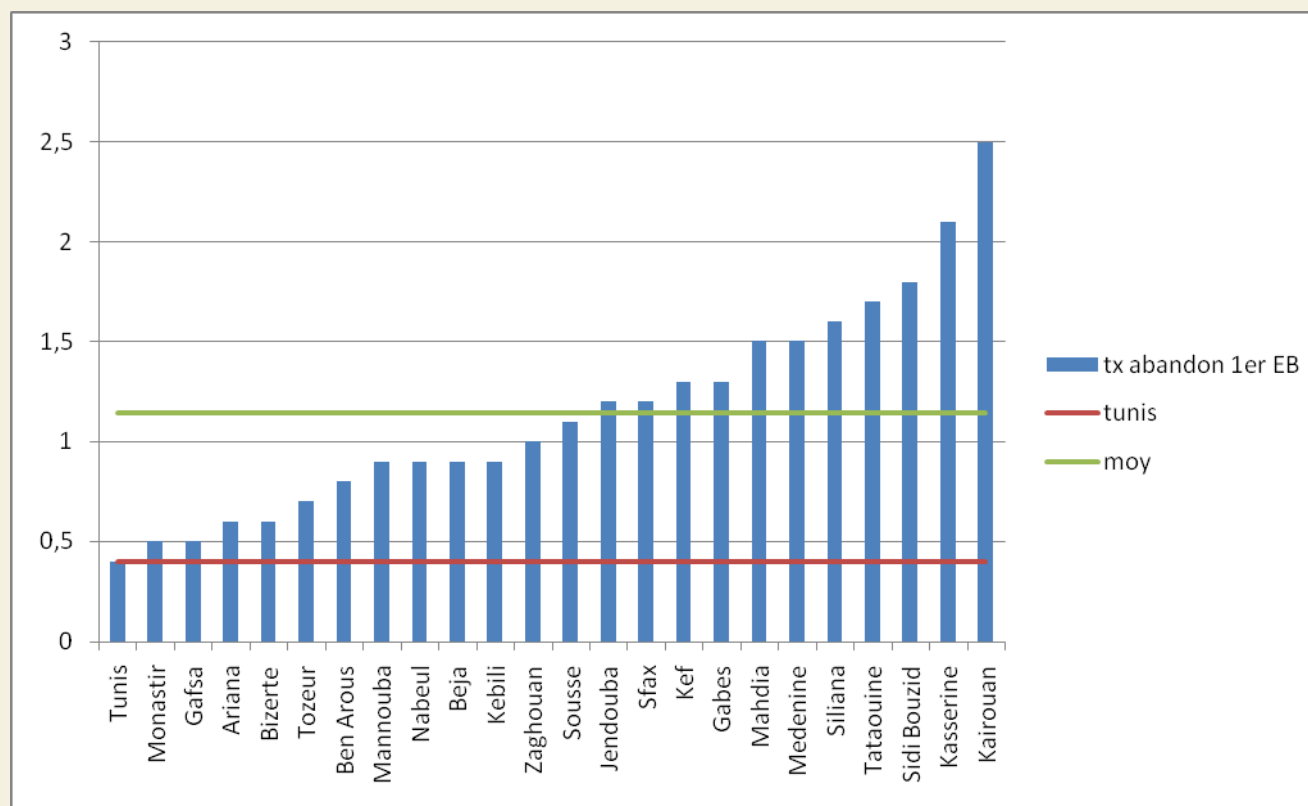
% schools with security fences



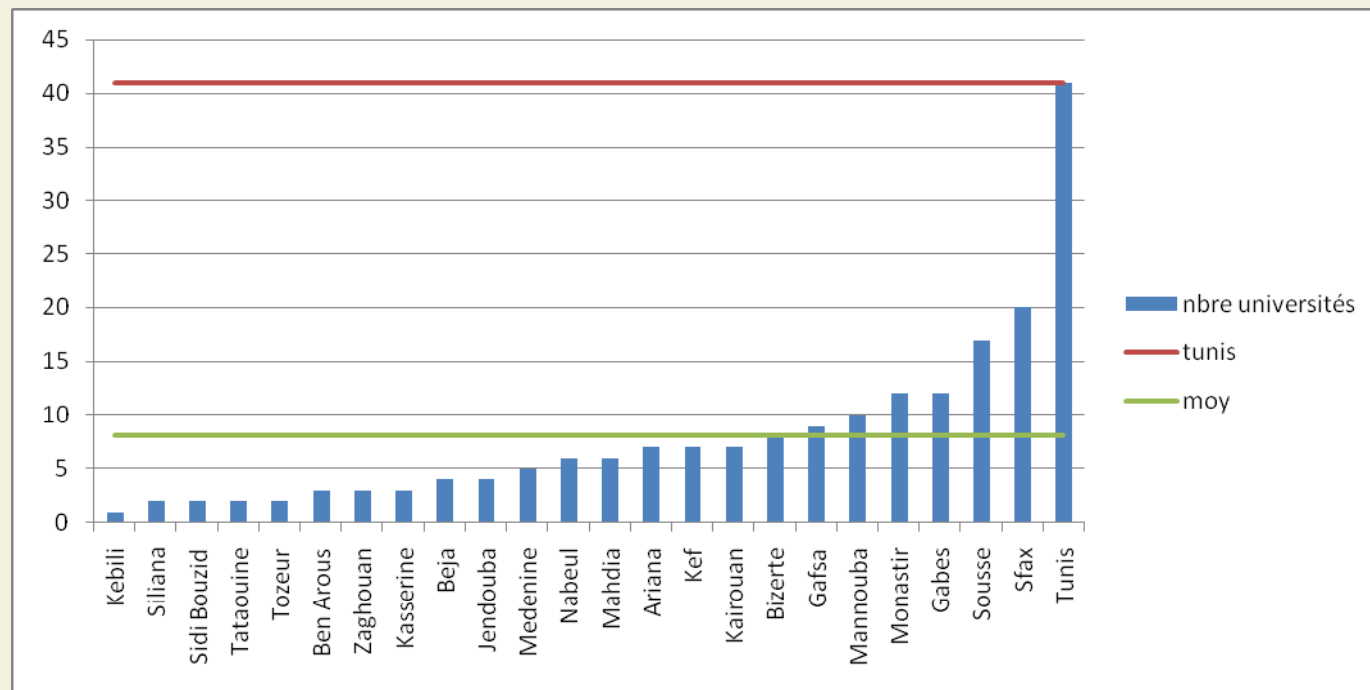
% repeating a grade (primary school)



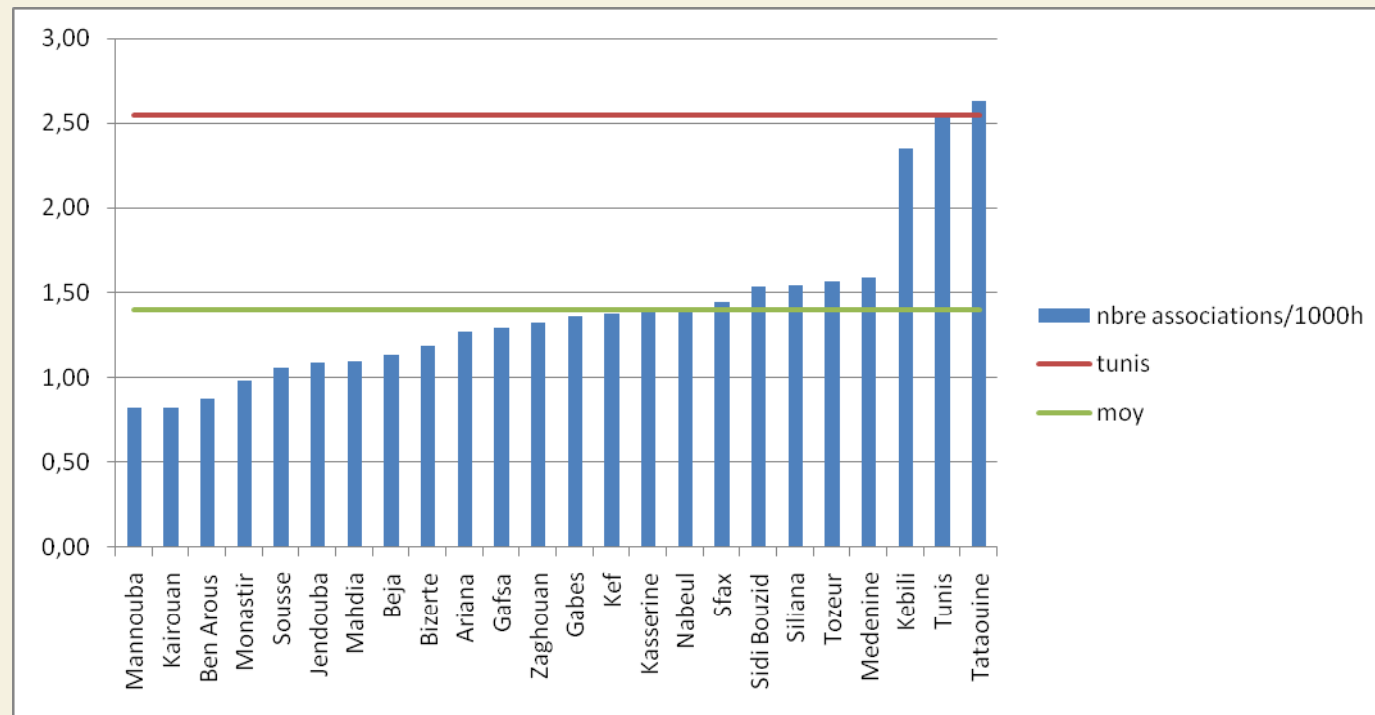
% school drop-out (primary school)



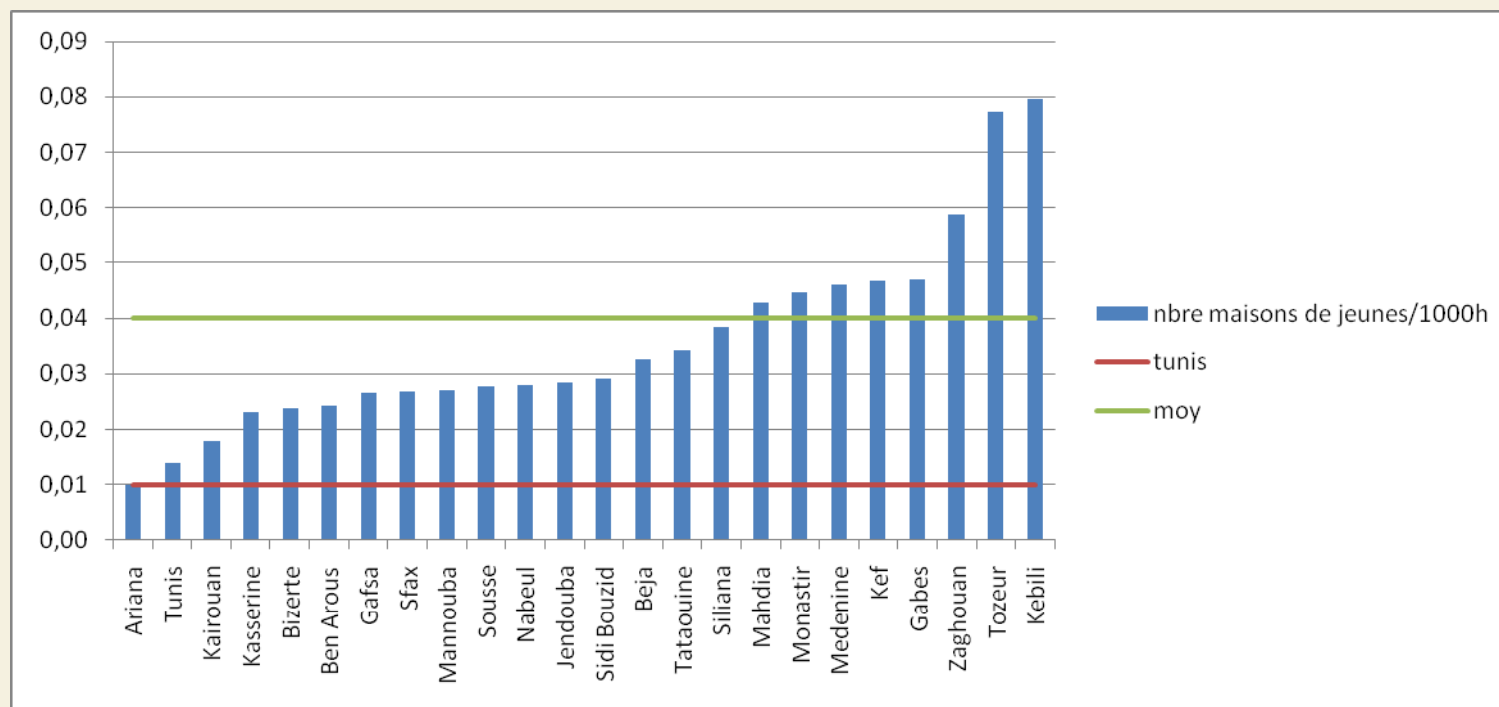
Number of universities



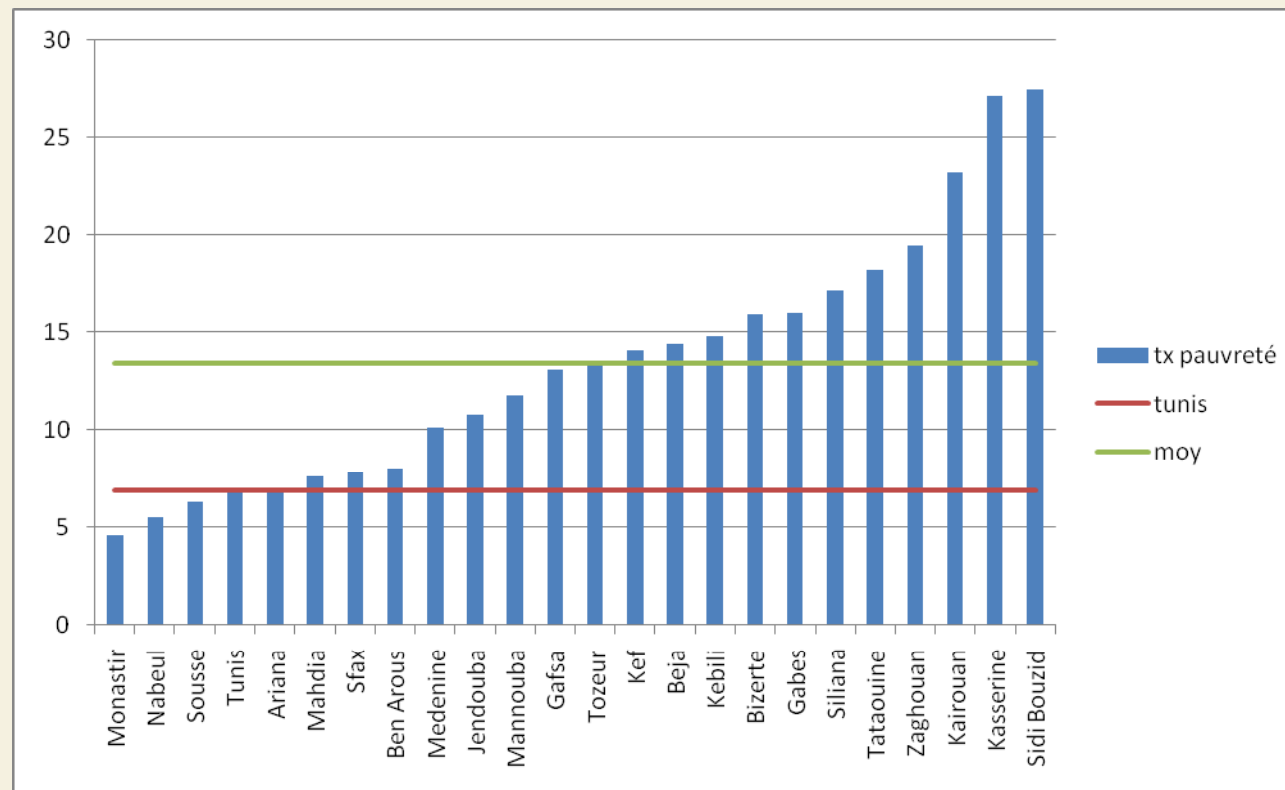
Number of associations/1000h



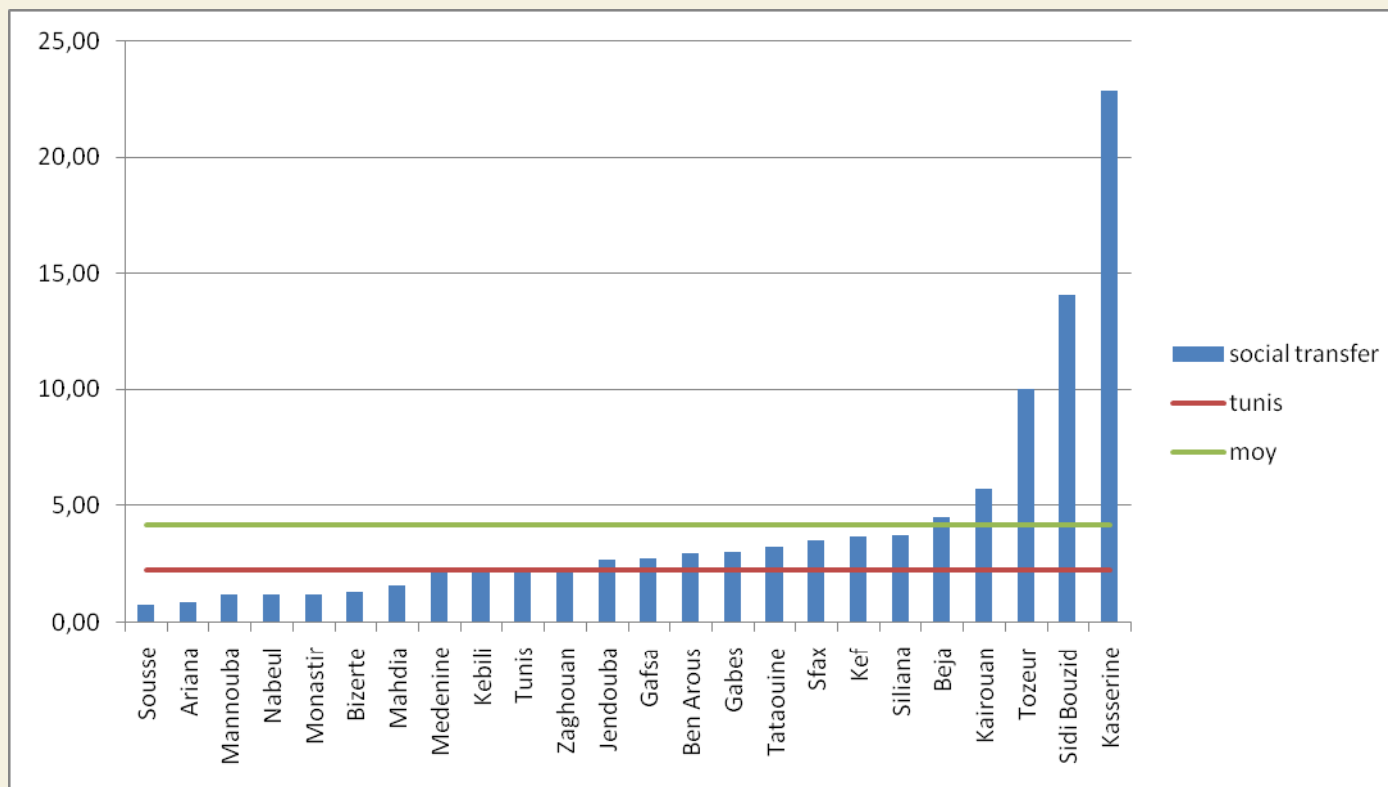
Number of youth centers/1000h



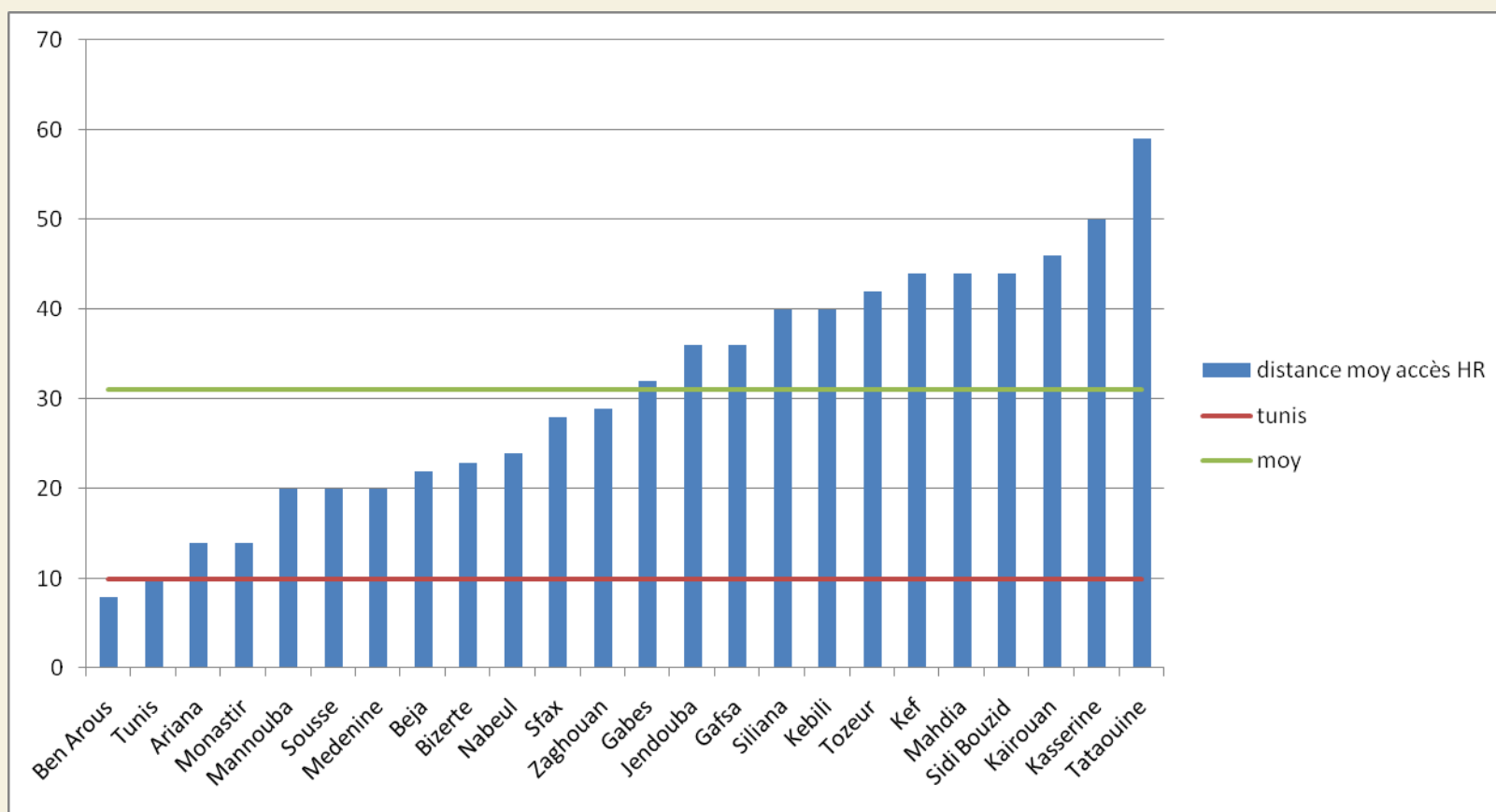
Poverty rate



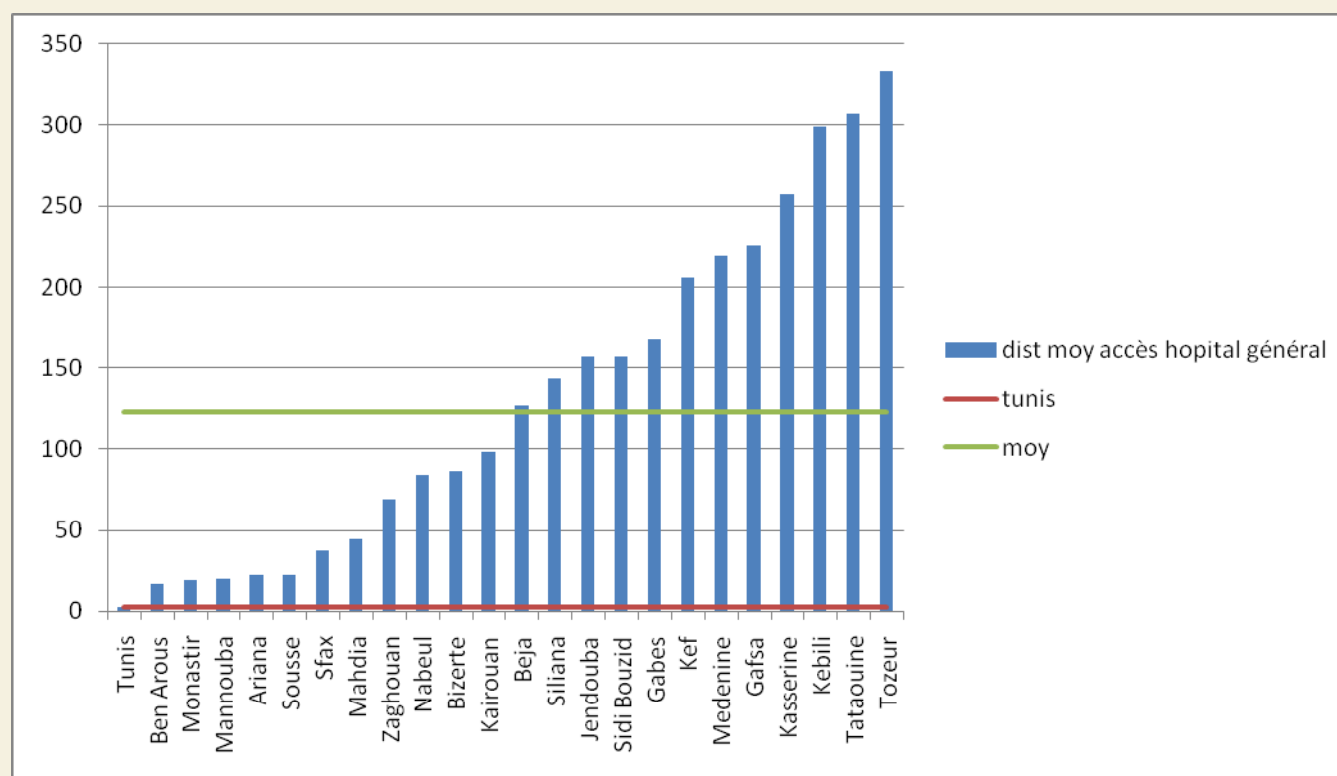
% social transfer



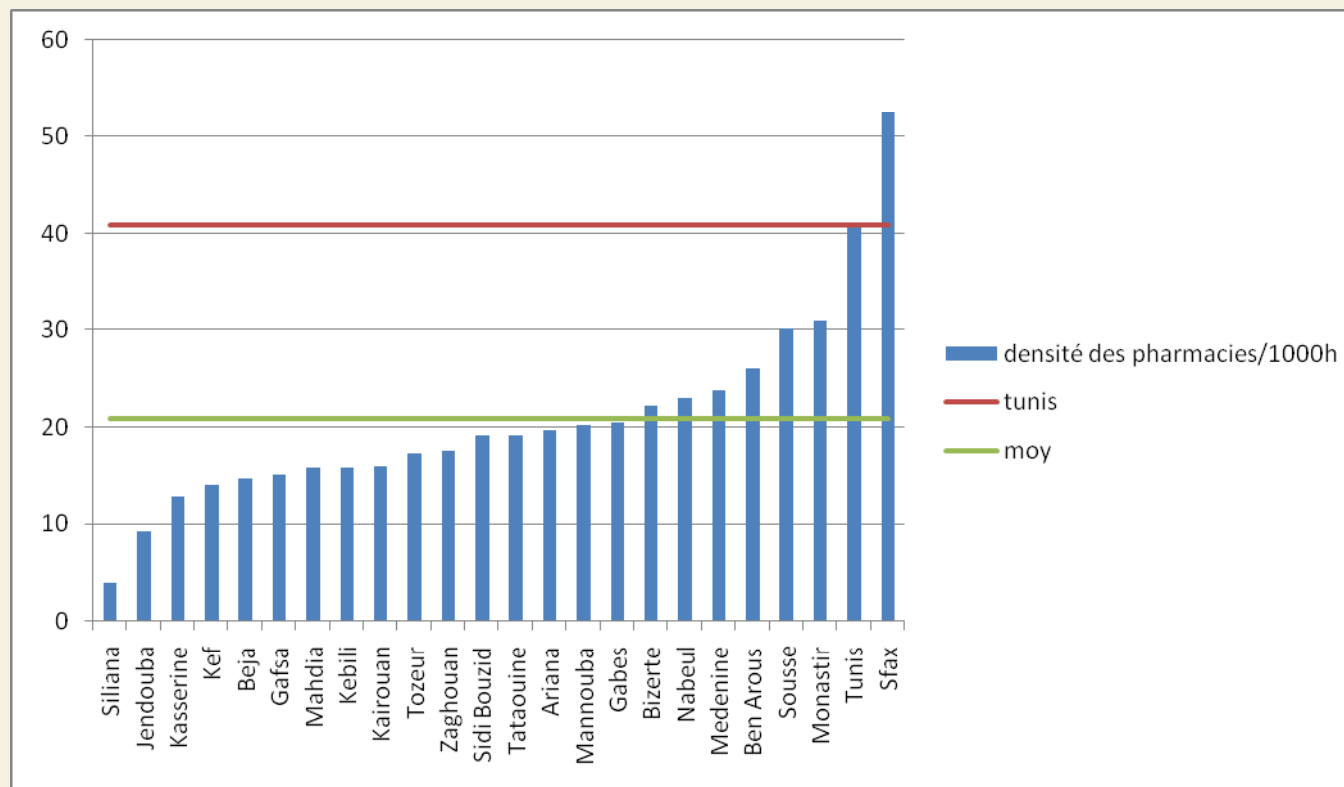
Means distance to a regional hospital



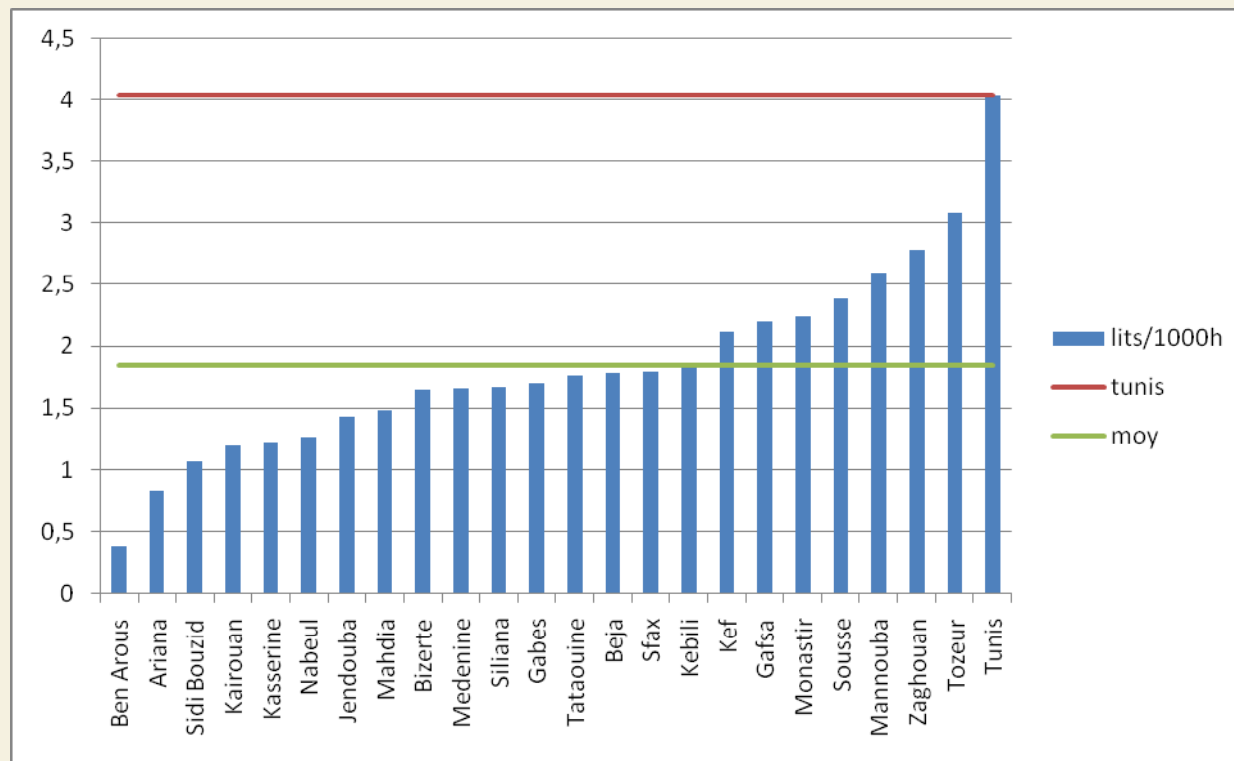
Means distance to a general hospital



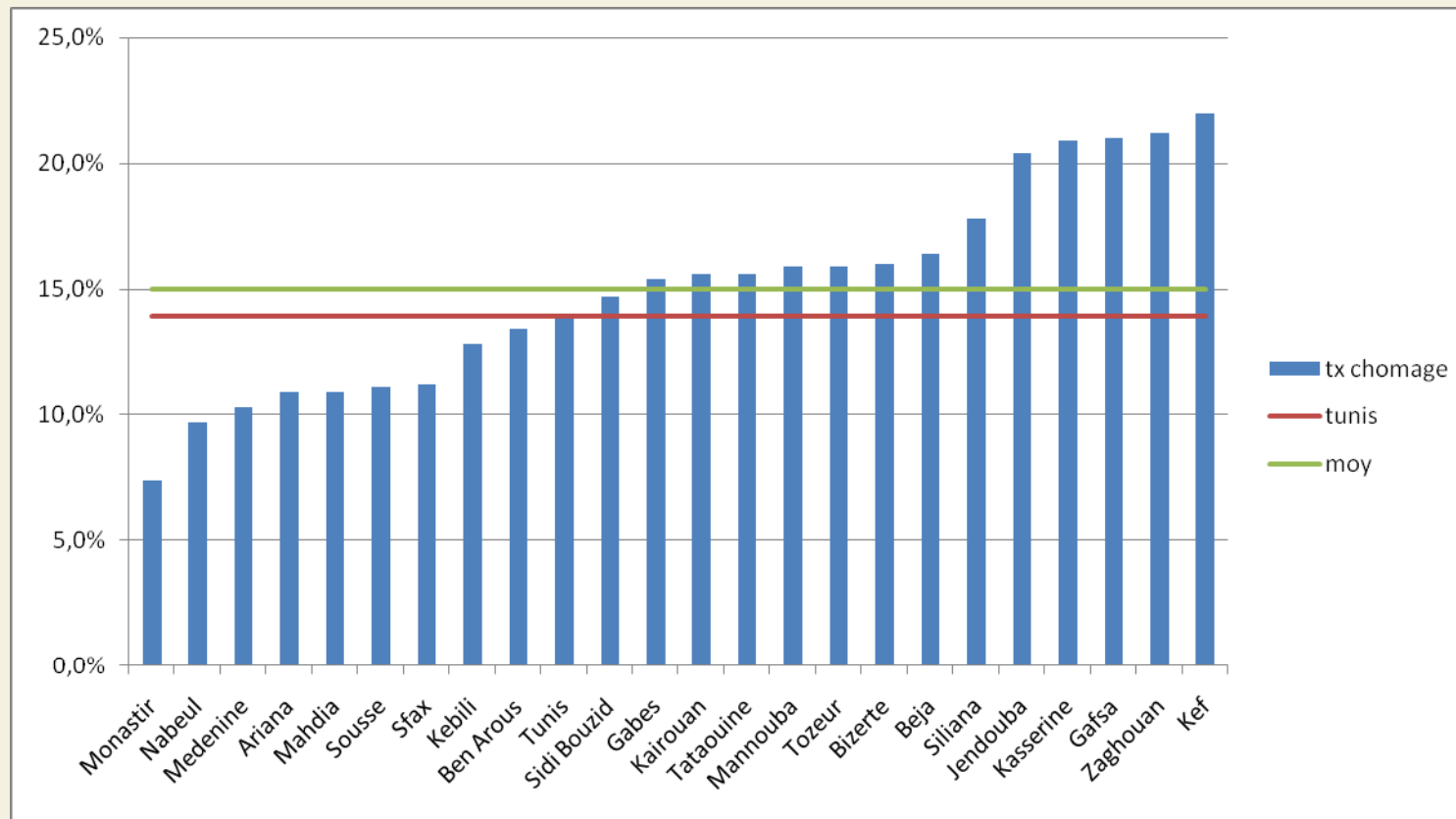
Pharmacies/1000h



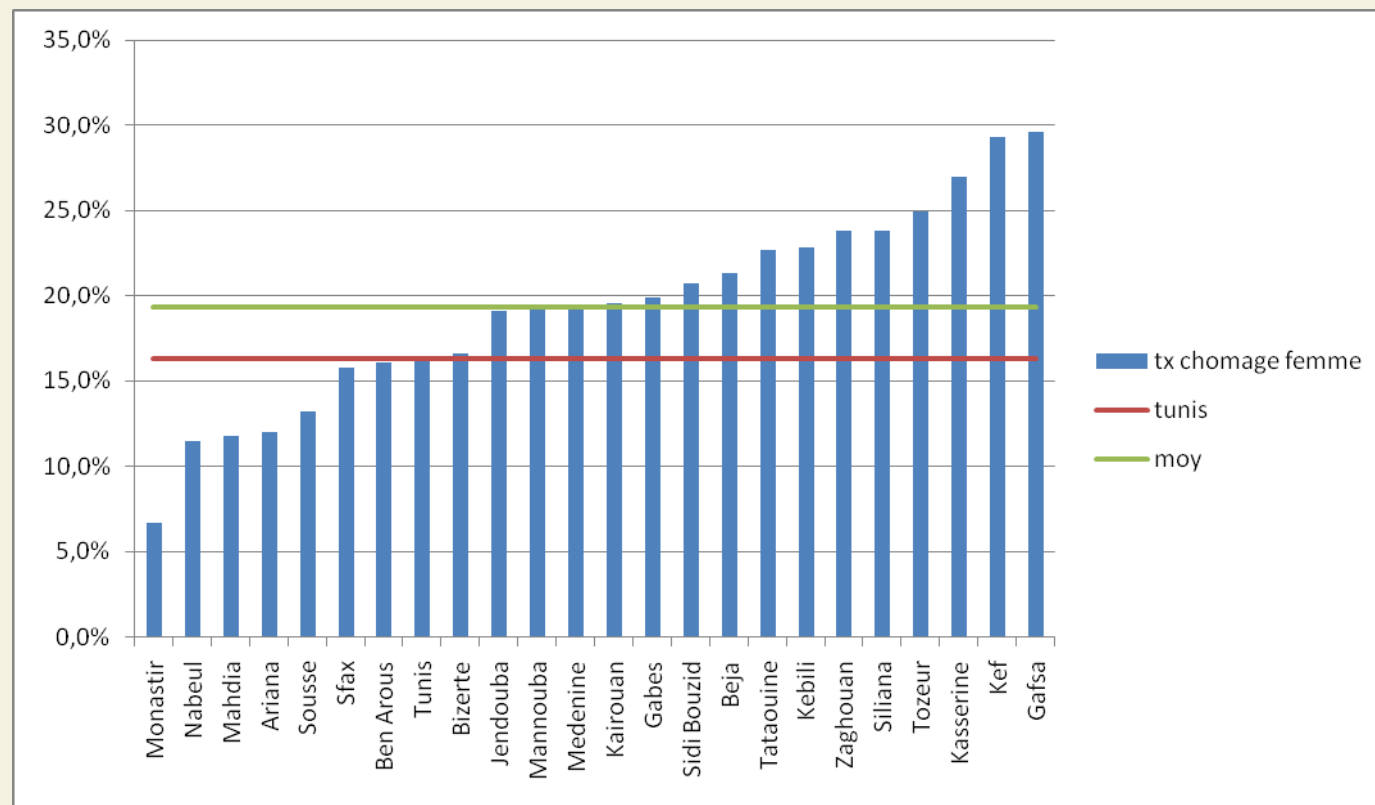
Bed/1000h



Unemployment rate



Women unemployment rate



Private enterprises/1000h

