

REGIONI TRA SFIDE E
OPPORTUNITÀ INATTESE
SO.44 VALORIZZARE LE REALTÀ LOCALI
CON LA PIANIFICAZIONE-PROGETTAZIONE
ECOLOGICA GRAZIE ALL'INNOVAZIONE

code_XclTy INCREMENTAL STRATEGIES FOR
INDIGENOUS RESOURCES

3 SETTEMBRE 2020

FRANCESCA SCHEPIS ARCHITETTO

PH.D. IN PROGETTAZIONE ARCHITETTONICA E URBANA, PROFESSORE A CONTRATTO E ASSEGNISTA DI RICERCA
DIPARTIMENTO ARCHITETTURA E TERRITORIO – dARTE UNIVERSITÀ DEGLI STUDI *MEDITERRANEA* DI RC

code=Xcify

Chiara Locardi | Mario Morrica | Francesca Schepis

Michele Bagnato | Federica Marchetti | Sara Anna Sapone | Doaa El Sayed Salaheldin

Elif Parmakisz

Xuan Cao | Giulia Carini | Sarah Casaburo | Li Tian Chen | Zi Chen | Hasan Debes | Matilde Dei Vecchi | Annalisa Fava | Roberto Ferlini | Cristina Finocchi | Alessandro Foroni | Eleonora Fusetti | Xixi Gao | Luwei Guo | Yuqin He | Jiani Huang | Samskriti Jindal | Ruodan Li | Yujie Li | Yiwen Liu | Randa Mujahed | Qhawarizmi Norrisham | Yanquan Ouyang | Giada Panzetti | Dionisio Salvador | Oyku Sener | Benat Shala | Yuchen Tang | Cahit Caner Unver | Linqing Wang | Xinyi Wang | Xiaoyuan Wu | Tianci Xie | Lingyang Xu | Fan Yan | Han You | Qilu Zhang | Bingnan Zhang | Bingmo Zhang | Yuyan Zhang | Wenwen Zhang |

Manifesto

- 1. EXPLOSION** - fragmentation | activation | permutation
- 2. OVERLAPPING** - interaction | floating | artificial intelligence
- 3. BALANCE** - filtering | time lapse | hybridization
- 4. GROW BEYOND REALISM** - adaptation | gear | distortion
- 5. BREATHING PLATFORM** - transition | connectivity | reforestation
- 6. INTERACTIVE LANDSCAPE** - integration | cooperation | communication
- 7. INNOVATIVE CONSERVATION** - Static | dynamic | fluid
- 8. DUCTILE FRAGILITY** - Anti-cluster | diversification | re/de-construction

Paradox

[Greek παράδοξος, παρα- against, δόξα opinion]

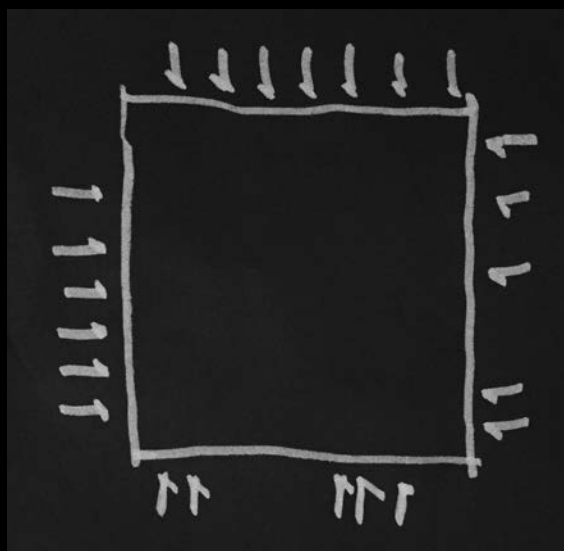
Affirmation, proposition, thesis, opinion that, for its content or for the form in which it is expressed, **appears contrary to the common opinion** or to the verisimilitude and therefore succeeds **surprising or incredible**. The term was already used by the Stoics, to designate those theses, especially ethical, that appeared **to contrast with common experience** [...].

A claim that **two apparently contradictory ideas are true**.

A thing involving **contradictory yet interrelated elements** that **exist simultaneously and persist over time**.

A person or thing having **contradictory properties**.

An unanswerable question or difficult puzzle, particularly one which leads to a **deeper truth**.





Code

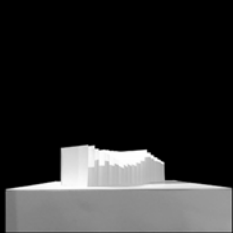
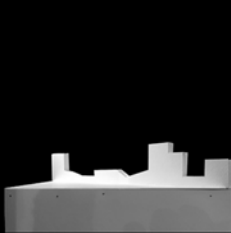
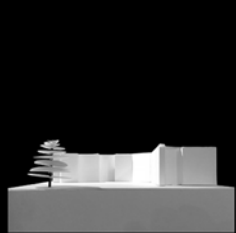
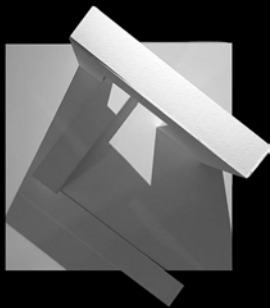
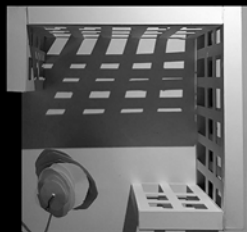
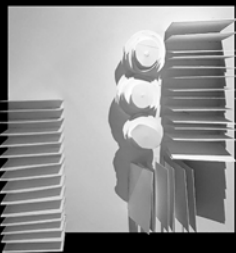
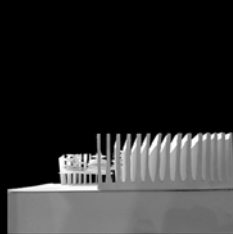
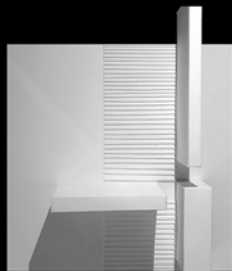
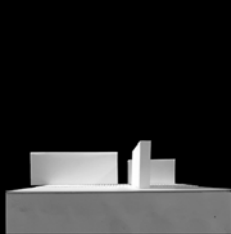
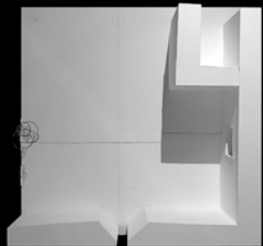
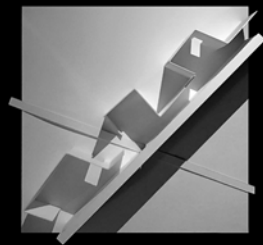
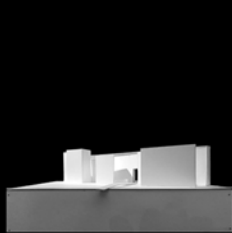
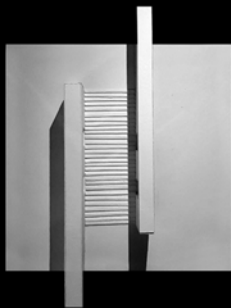
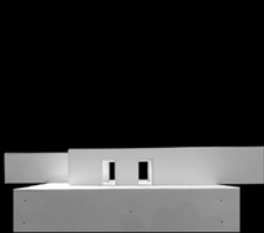
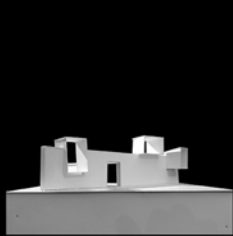
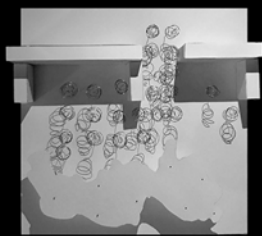
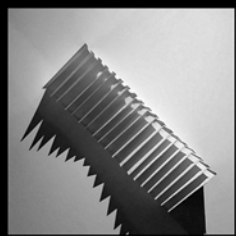
[Latin codex -dicis]

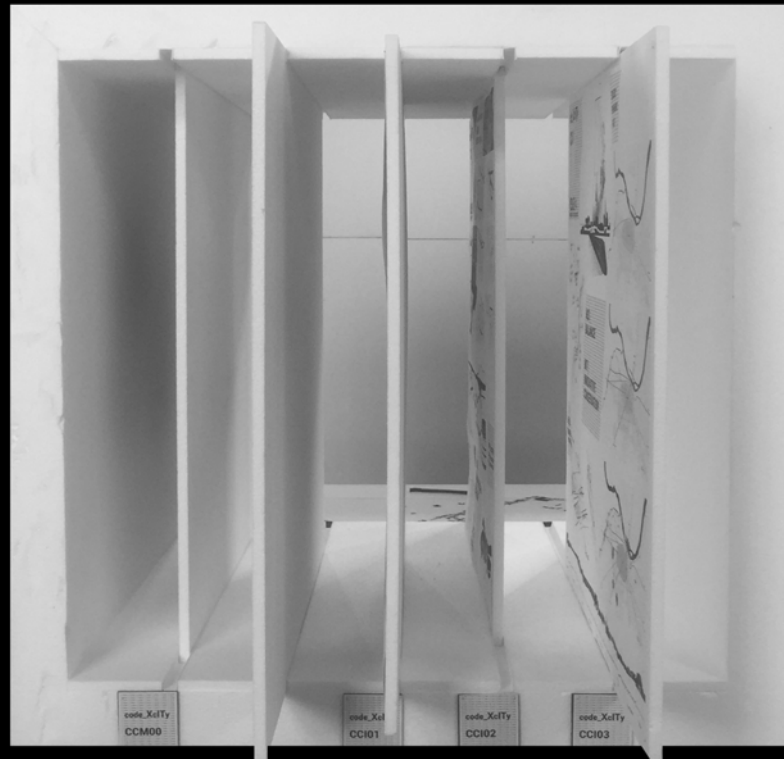
In bibliology, **manuscript book**, in opposition to the printed book, and especially with reference to age prior to the diffusion of the press.

In the legal language, **collection of laws**. **Set of symbols or characters** used in certain communication, recording or information processing systems to represent, on the basis of **assigned rules**, the symbols or characters of another communication system as happens for c. alphabetic and alphanumeric ones, but sometimes to **transmit more complex information or messages**.

Every organic system of symbols and references that allows the **transmission and comprehension of a message**, that is a communication, whose meaning can only be understood if it is a speaker and a listener (o writer and reader) use the same code.

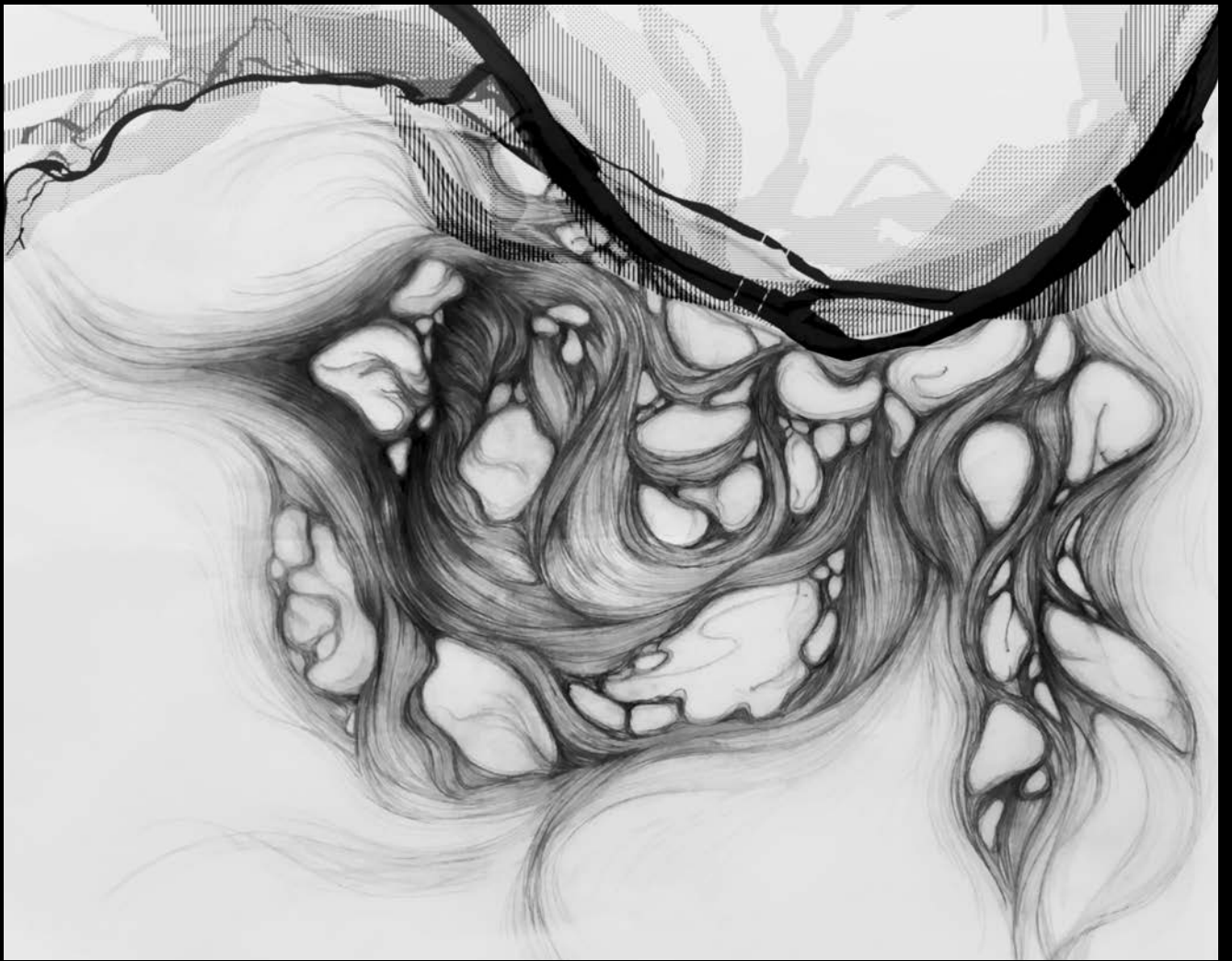
In biology, c. genetic, system through which the **genetic information is preserved and transmitted**: the latter, contained in the **nucleus**, is registered on the molecule of deoxyribonucleic acid (DNA), the main constituent of the **chromosomes** [...].





code_XclTy/ Archive

LANDSCAPE 4.0 / Body

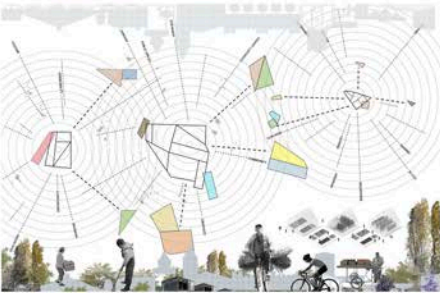


SLOT #1
MANIFESTO

code_XclTy

CCM00

MANIFESTO



M1

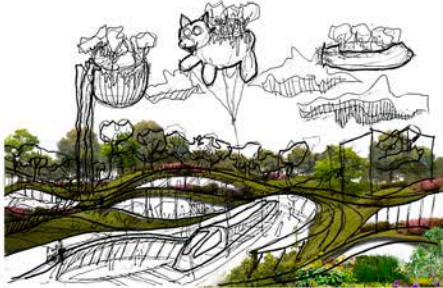
EXPLOSION

Fragmentation
Activation
Permutation

M4 |

GROW BETOND
REALISM

Adaptation
Gear
Distortion



M2

OVERLAPPING

Interaction
Floating
Artificial Intelligence



M3

BALANCE

Filtering
Time Lapse
Hybridization

M5 |

BREATHING
PLATFORM

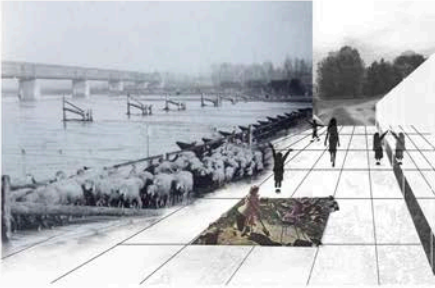
Transition
Connectivity
Reforestation

Re
forest
ation

M6 |

INTERACTIVE
LANDSCAPE

Integration
Cooperation
Communication



M7

INNOVATIVE
CONSERVATION

Static
Dynamic
Fluid



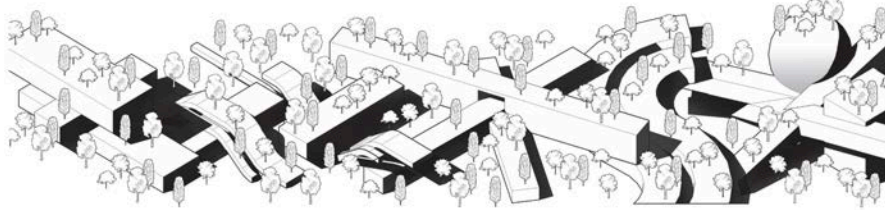
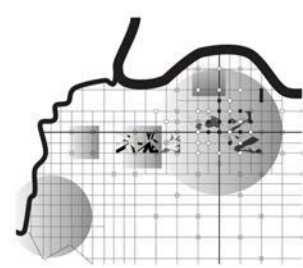
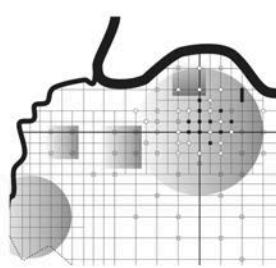
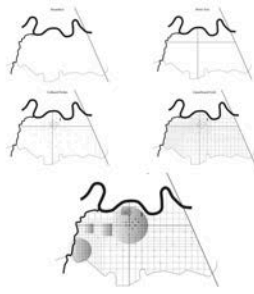
M8

DUCTILE
FRAGILITY

Anti-cluster
Diversification
Re/de-construction

code_XcITy
CCI01

ISSUE #1
CULTURE INNOVATION SERVICES

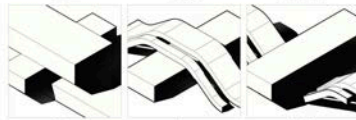


M2 |
OVERLAPPING

M5 |
BREATHING
PLATFORM

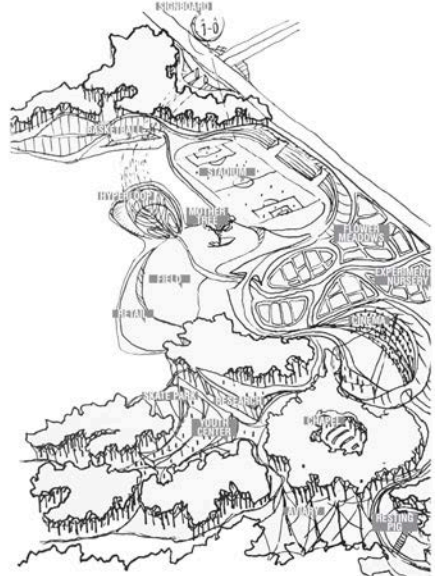


ELEMENTS / ACTIONS / EXPERIENCES



INTERACTION
FLOATING
ARTIFICIAL
INTELLIGENCE

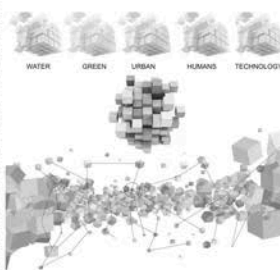
TRANSITION
CONNECTIVITY
REFORESTATION



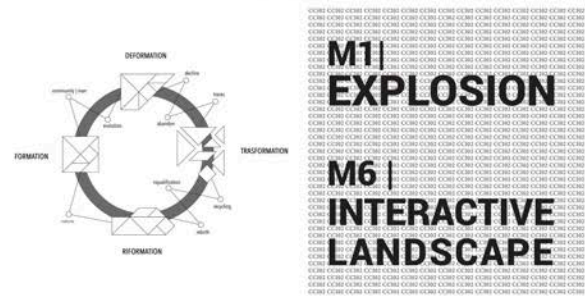
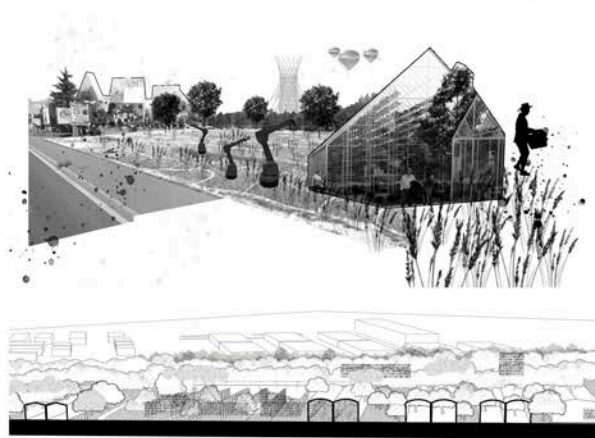
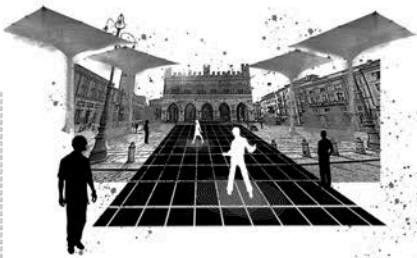
FOREST RESERVE

code XcItY
CCI02

ISSUE #2
PUBLIC / OPEN / SHARED SPACE

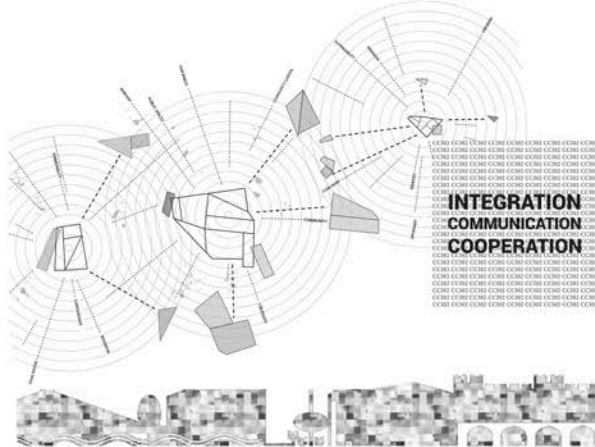


ACTIVATION
FRAGMENTATION
PERMUTATION



M1
EXPLOSION

M6
INTERACTIVE
LANDSCAPE



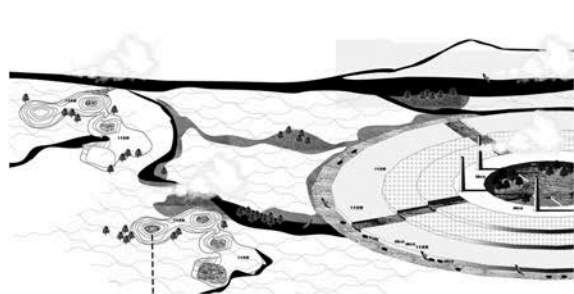
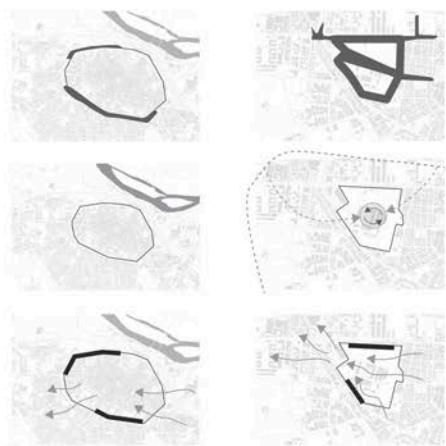
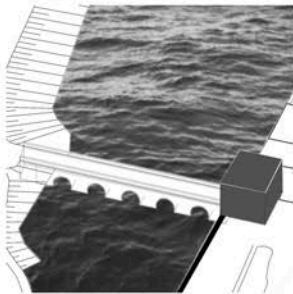
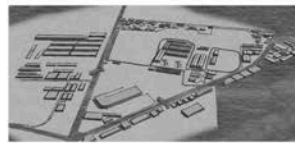
INTEGRATION
COMMUNICATION
COOPERATION

code_XcITy
CCI03

ISSUE #3
EDGES FENCES WEDGES



ADAPTATION
GEAR
DISTORTION

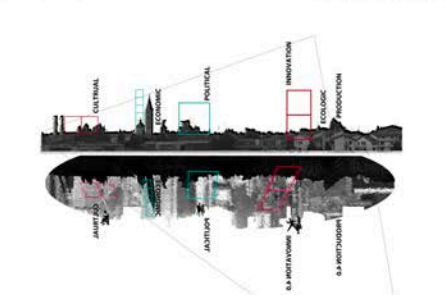


ANTI-CLUSTER
DIVERSIFICATION
RE/DE-CONSTRUCTION



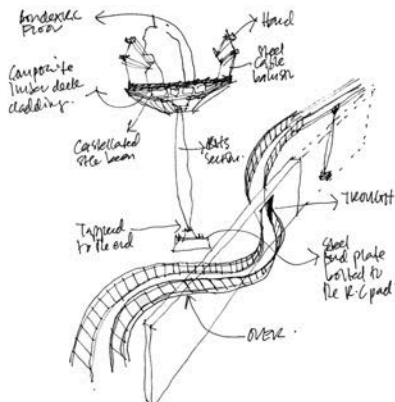
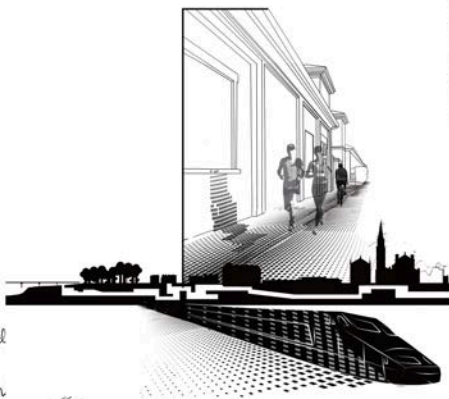
M4 |
GROW BEYOND
REALISM

M6 |
DUCTILE
FRAGILITY

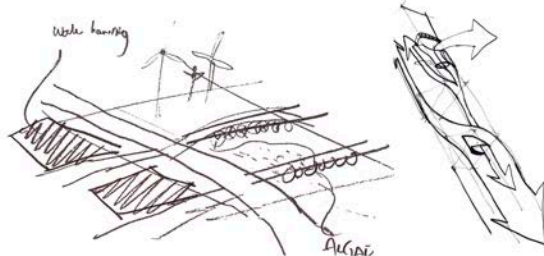


code XclTy
CCI04

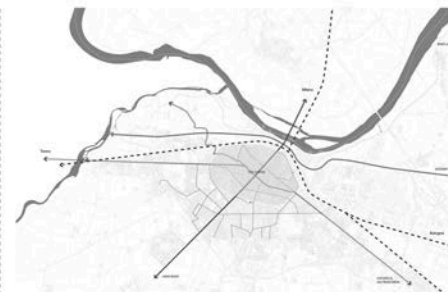
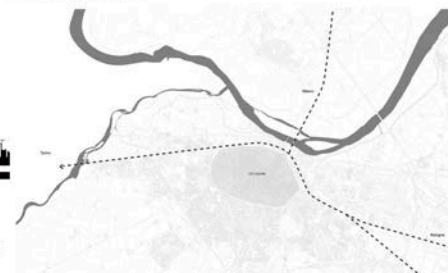
ISSUE #4
MOBILITY NODES CONNECTIONS



FILTERING
TIMELAPSE
HYBRIDIZATION



STATIC
DYNAMIC
FLUID

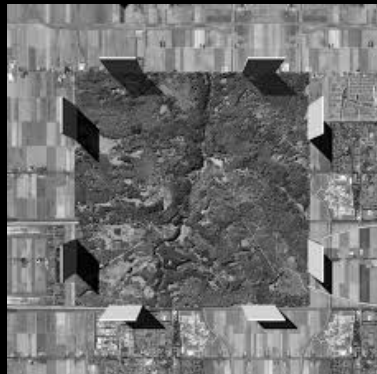
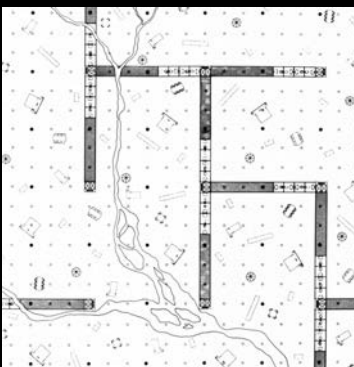
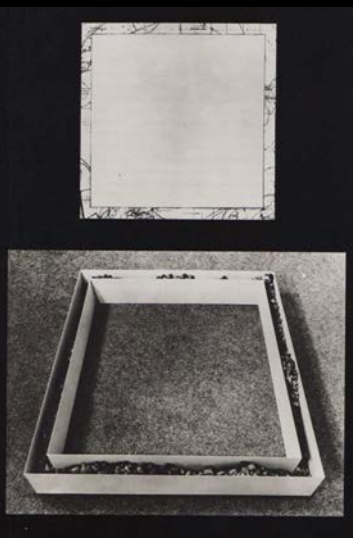
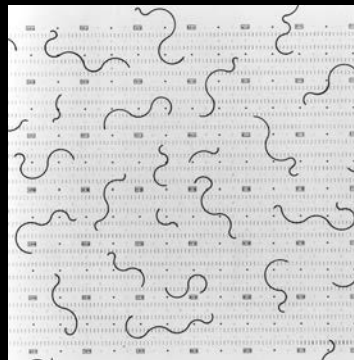
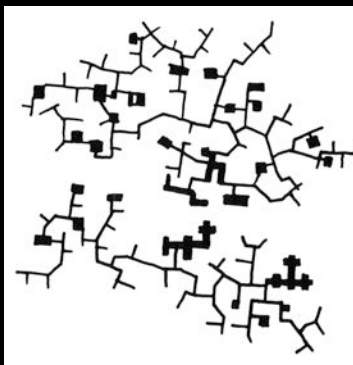


River Tribbia Agriculture Area #3 Area #2 Residential Questora Ancient wall Piazza Cavali Polmi university Area #1 Train Station Po River

SLOT #2

CITYSCALE

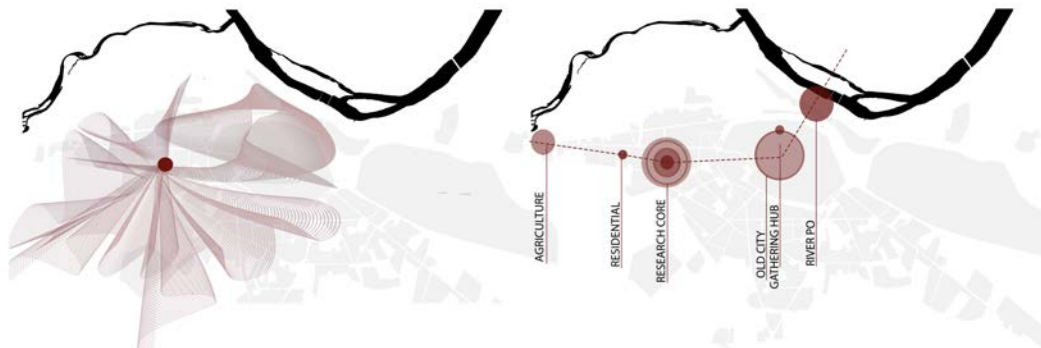
Cultural network | New urban attractors |
Ecological energy network | New urban flows





PHYSICAL CONNECTIONS

EXISTING CULTURAL BUILDINGS

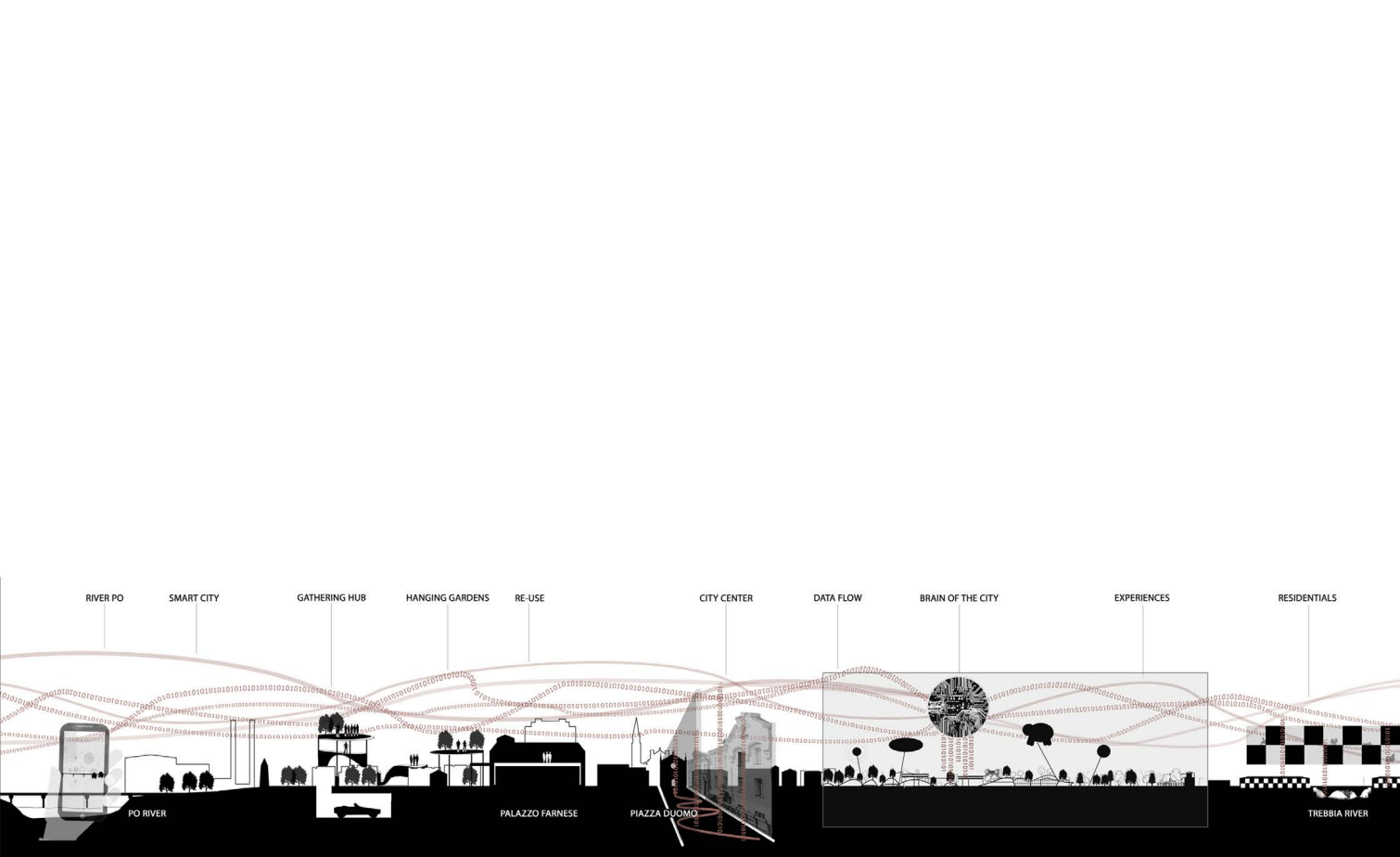


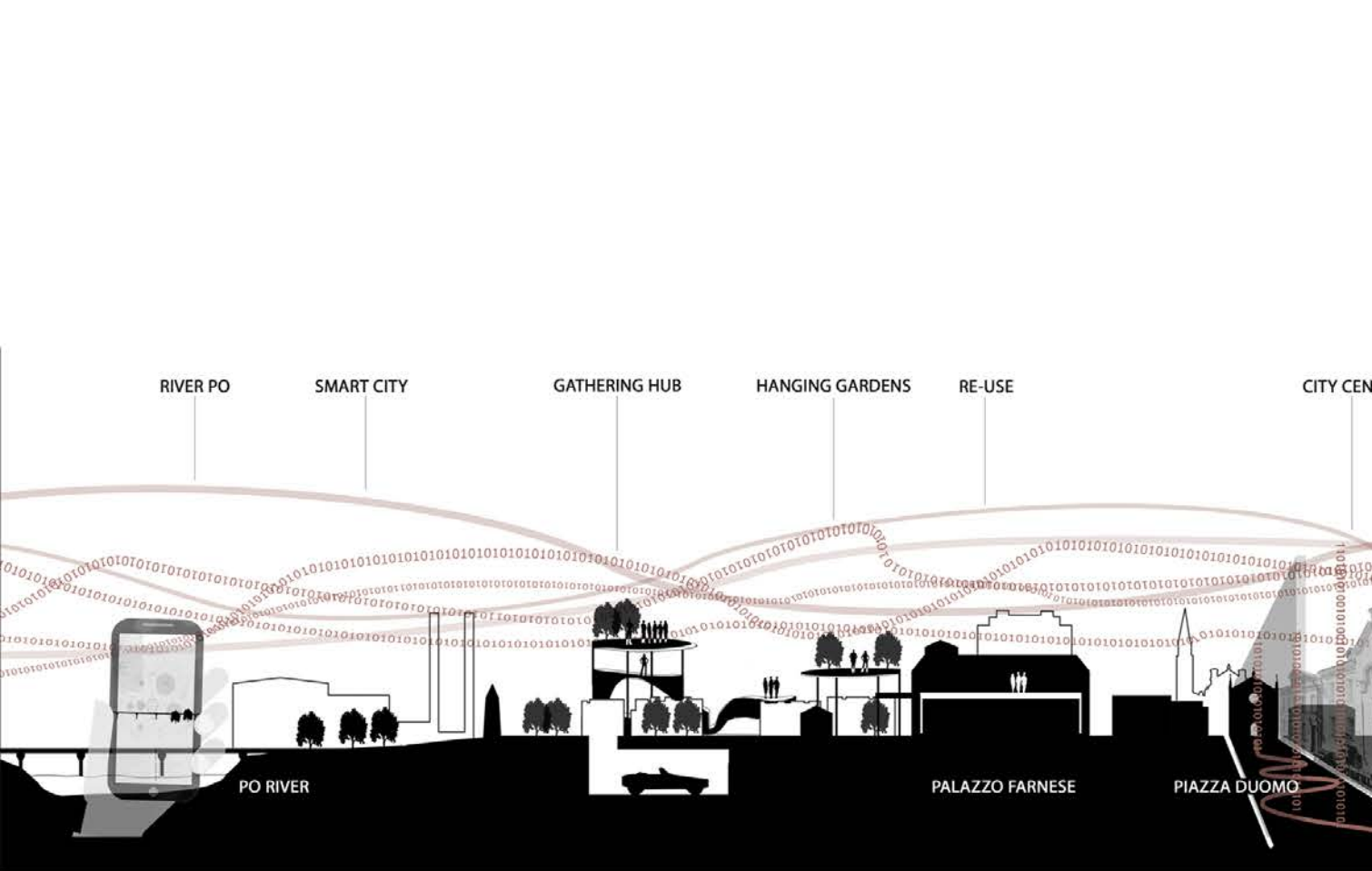
THINKING BRAIN OF THE CITY

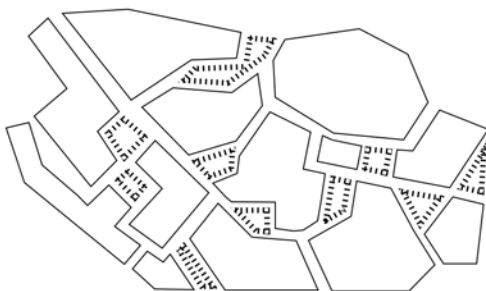
ACTION POINTS



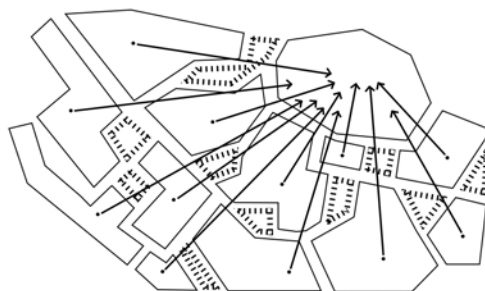
Cultural network | New urban attractors |
Ecological energy network | New urban flows







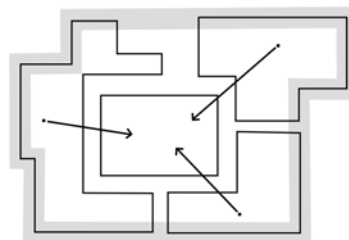
ISLANDS | CLUSTER



CITY CENTER AS AN ATTRACTOR



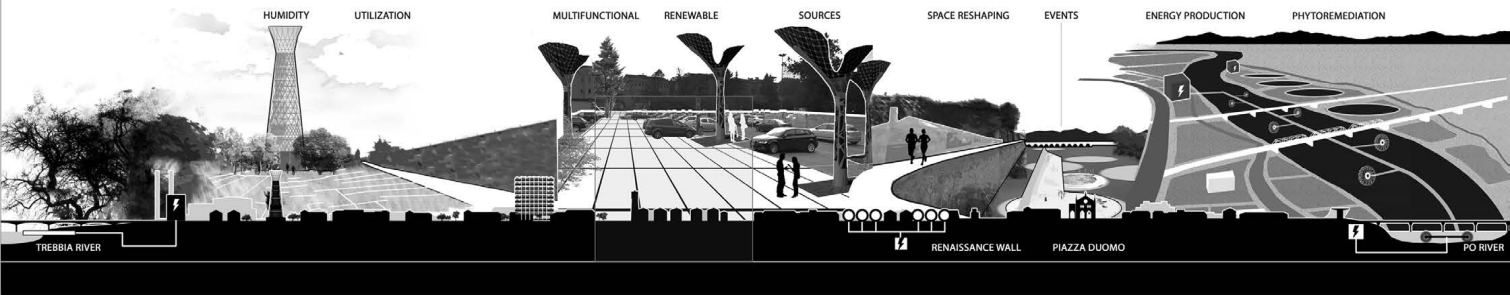
RESHAPE THE CLUSTER

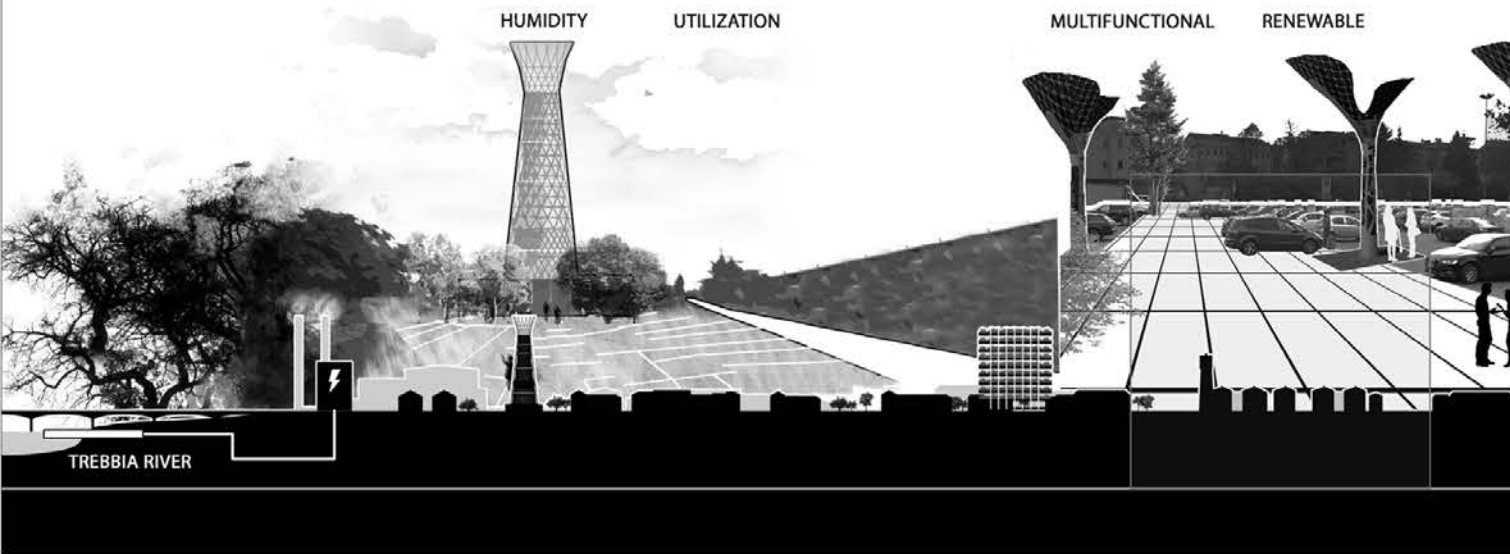


LIMIT | ACTIVATION
RESHAPE THE BORDERS



Cultural network | **New urban attractors** |
Ecological energy network | New urban flows



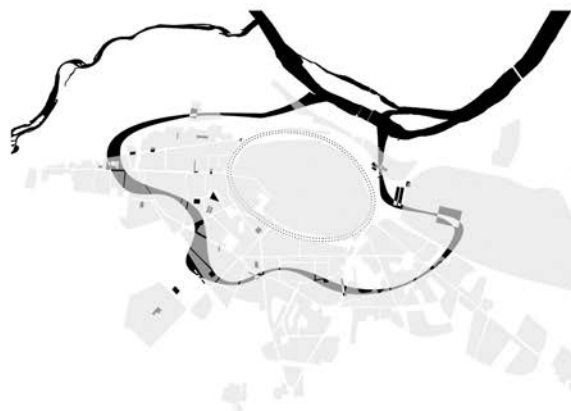




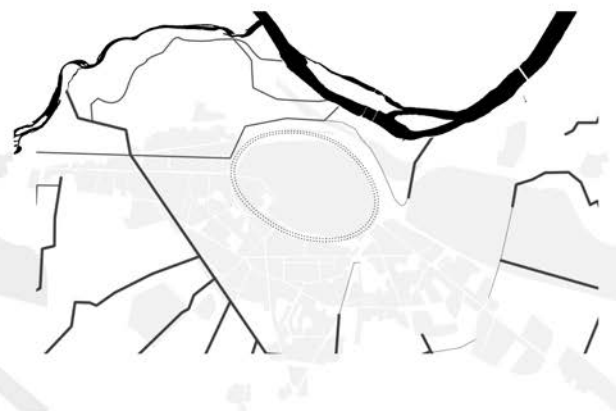
AGRICULTURE



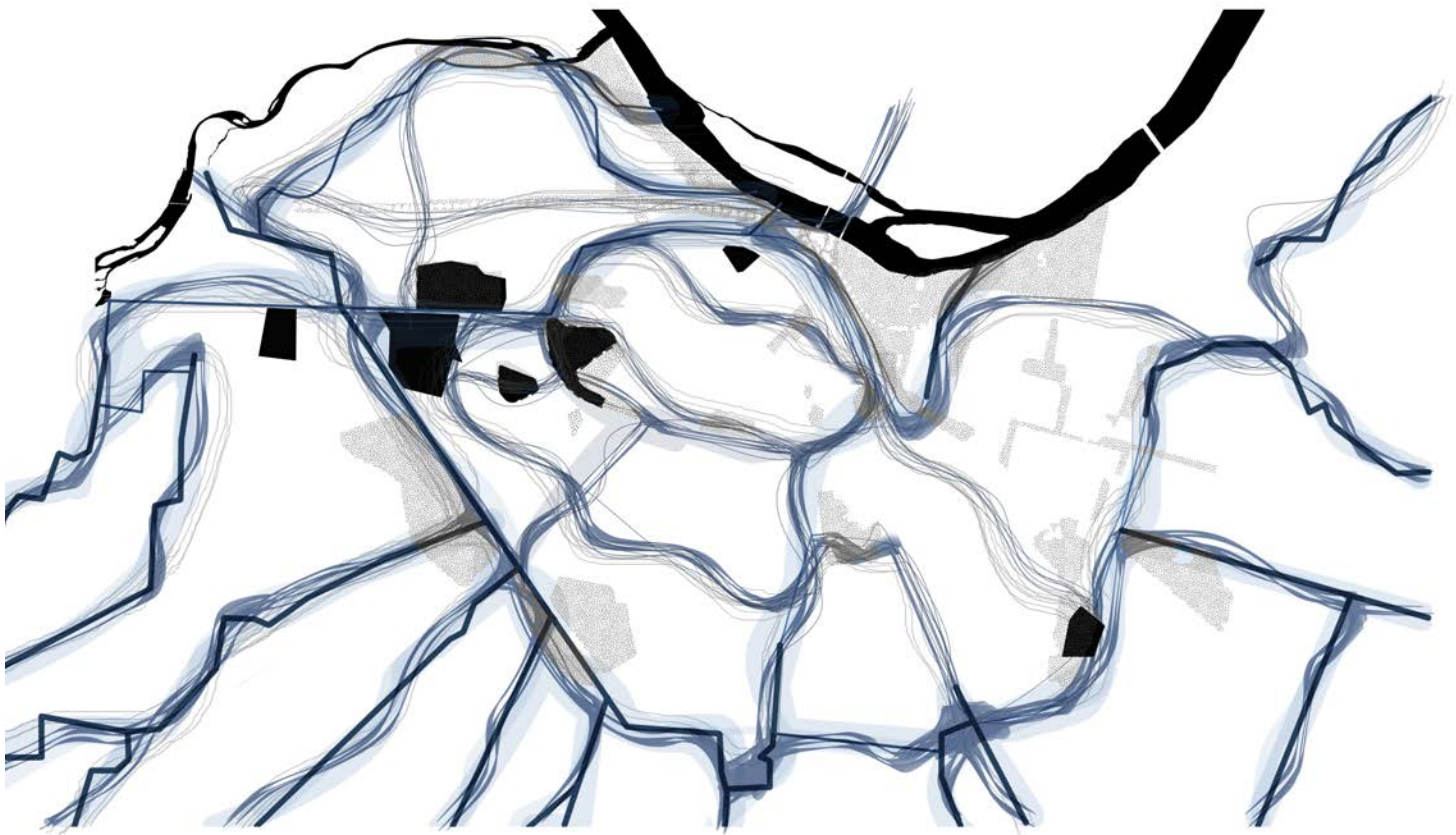
ENVIRONMENT



ENERGY



CANAL SYSTEM



Cultural network | New urban attractors|
Ecological energy network | New urban flows

AGRICULTURAL IRRIGATION

WATER COLLECTION

HYDRAULIC ELECTROGENERATION

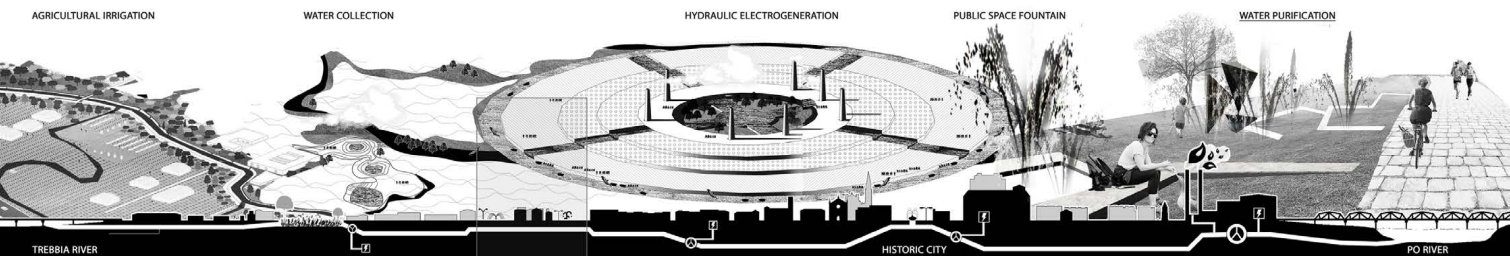
PUBLIC SPACE FOUNTAIN

WATER PURIFICATION

TREBBIA RIVER

HISTORIC CITY

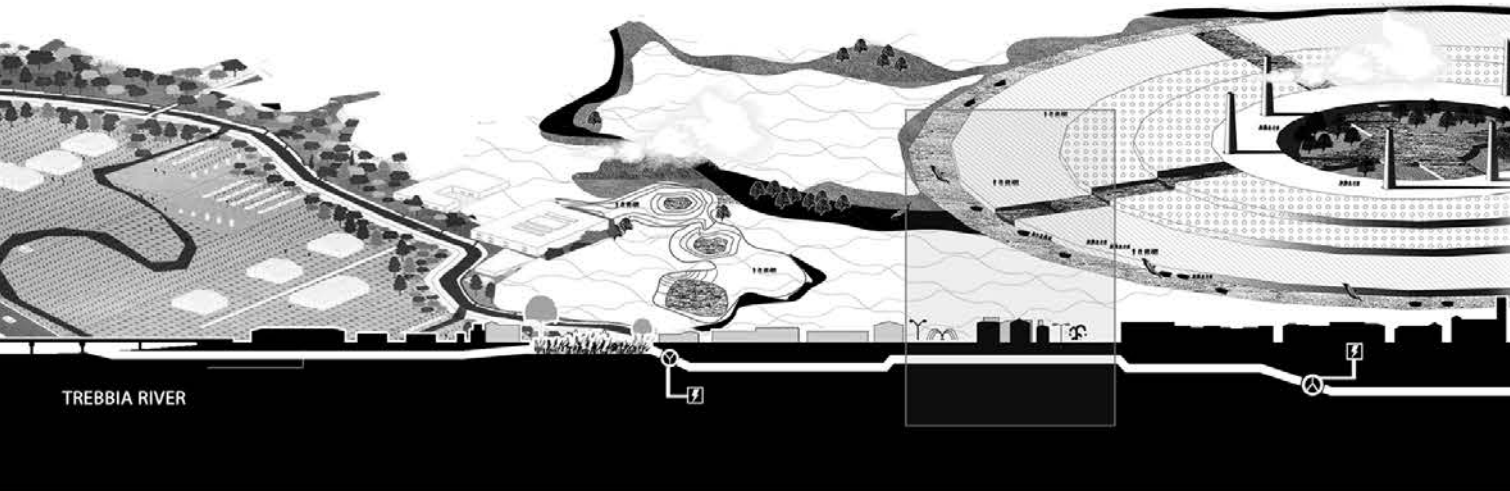
PO RIVER



AGRICULTURAL IRRIGATION

WATER COLLECTION

HYDRAULIC ELECTROGEN



TREBBIA RIVER



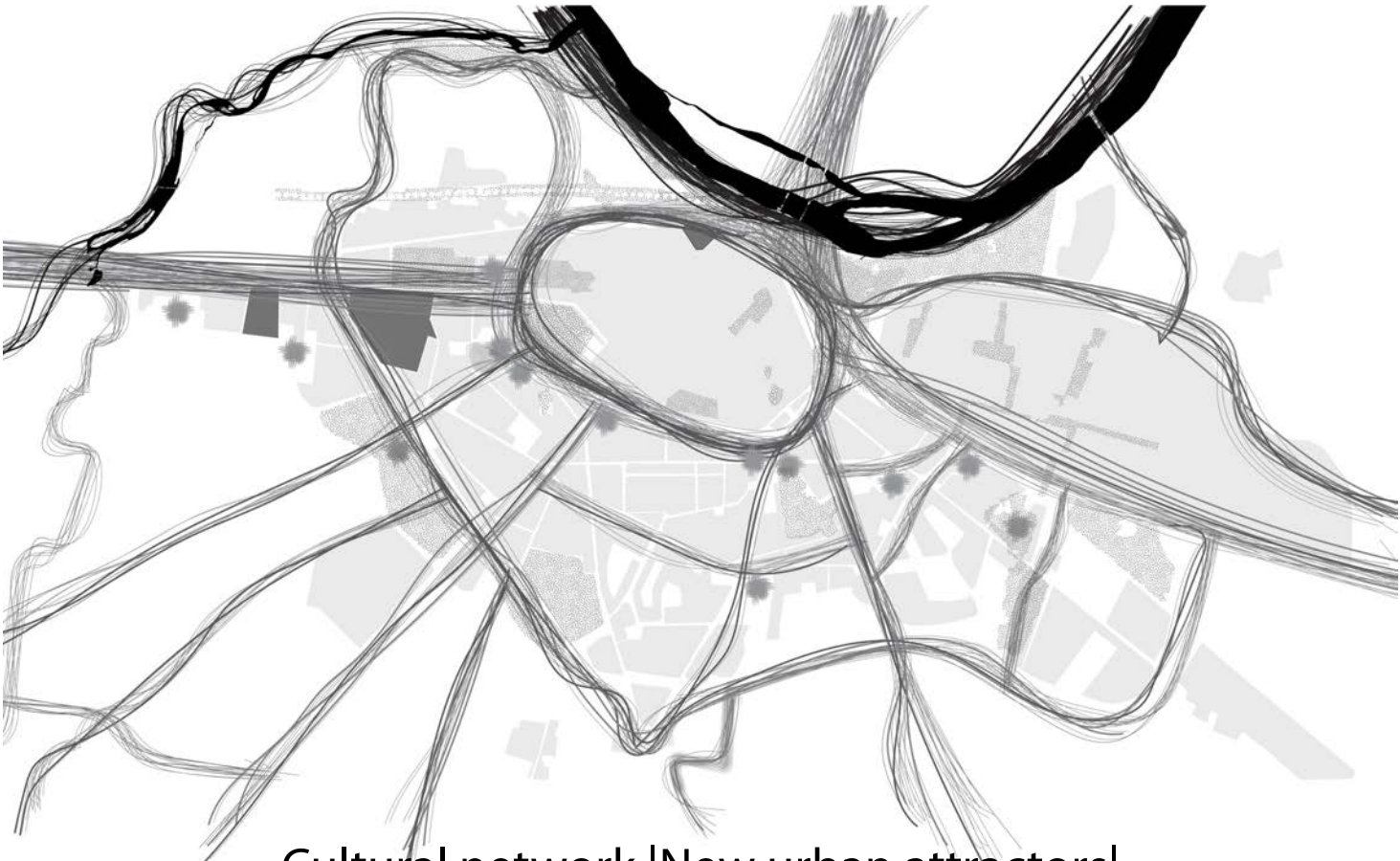
MAIN MOBILITY

INTERSTITIAL MOBILITY

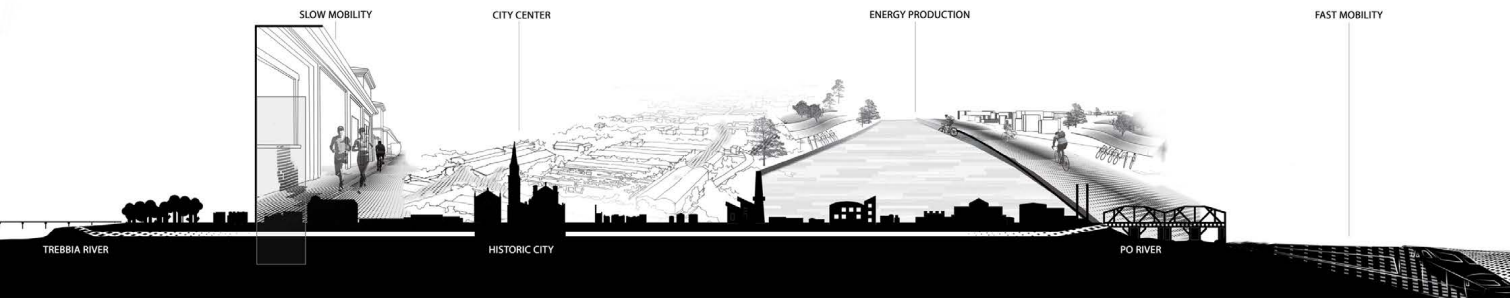


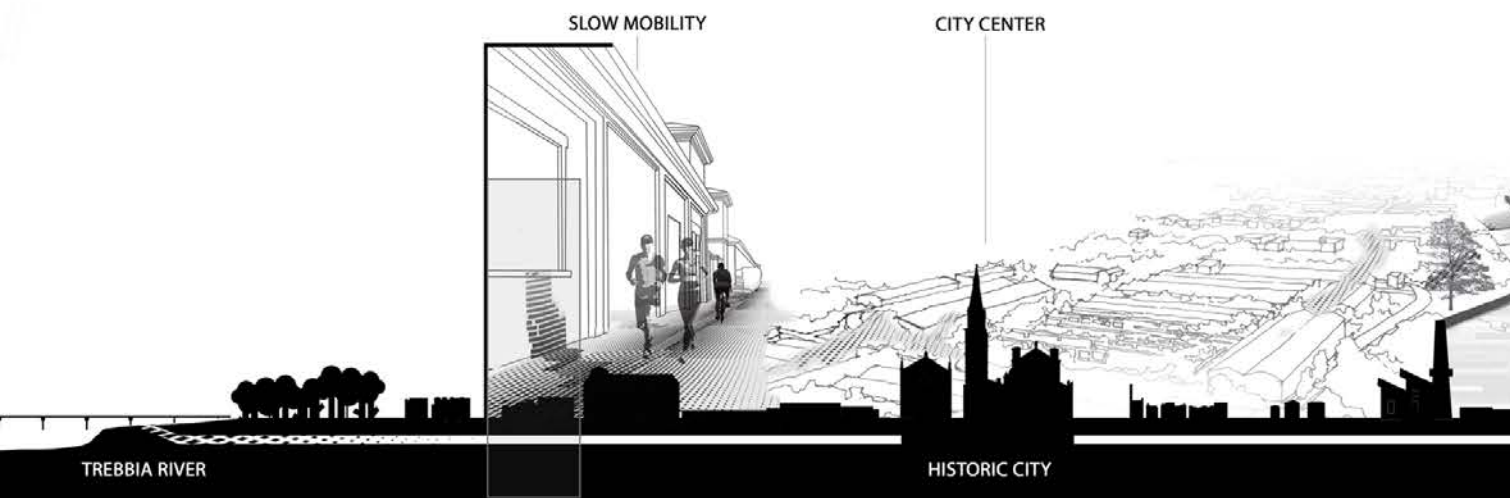
SECONDARY MOBILITY

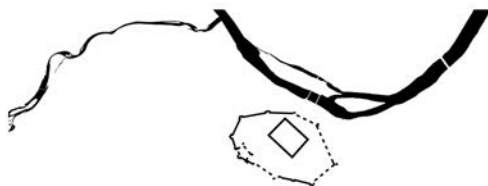
ENERGY SOURCE



Cultural network | New urban attractors |
Ecological energy network | **New urban flows**







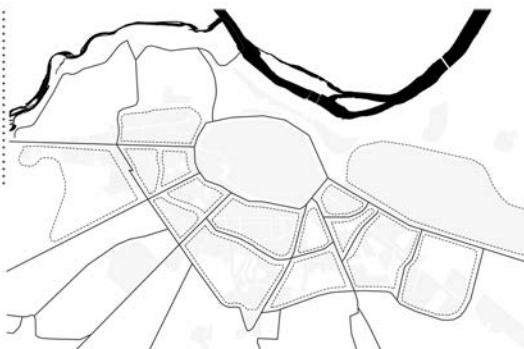
CASTRUM | RIVER | FARNESIAN WALLS



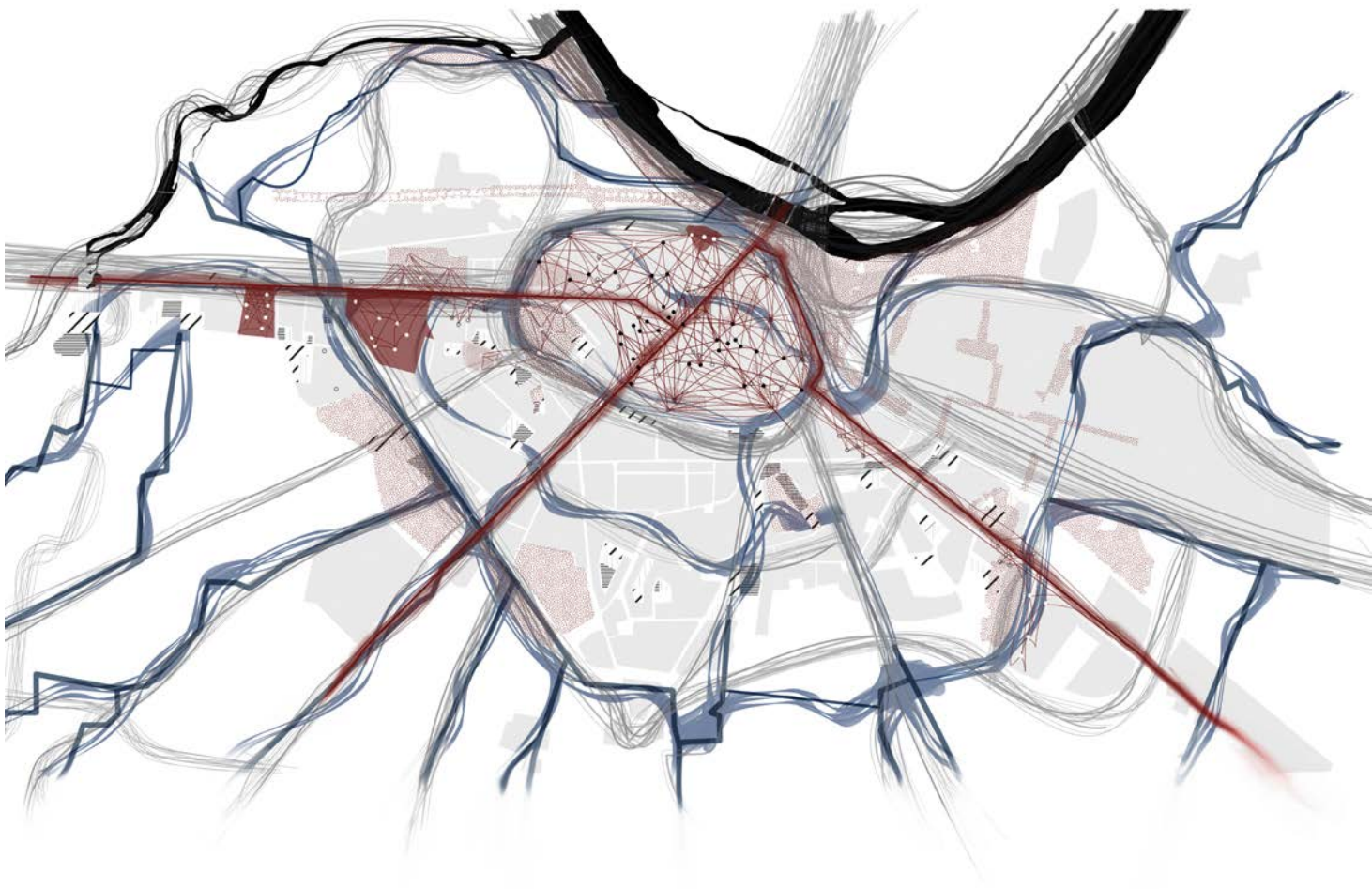
SPRAWL | ISLANDS

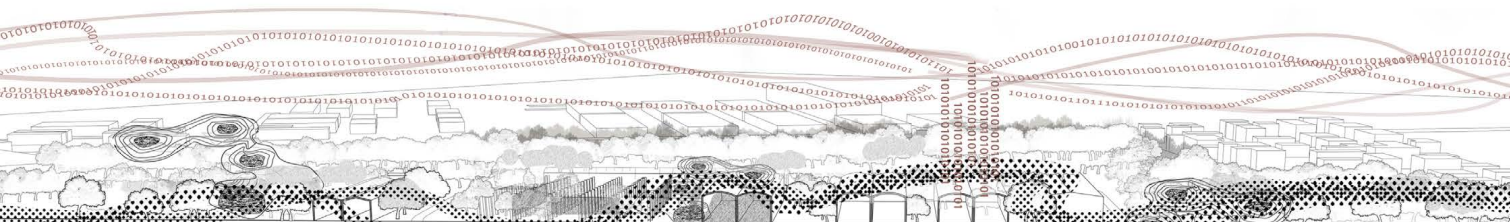


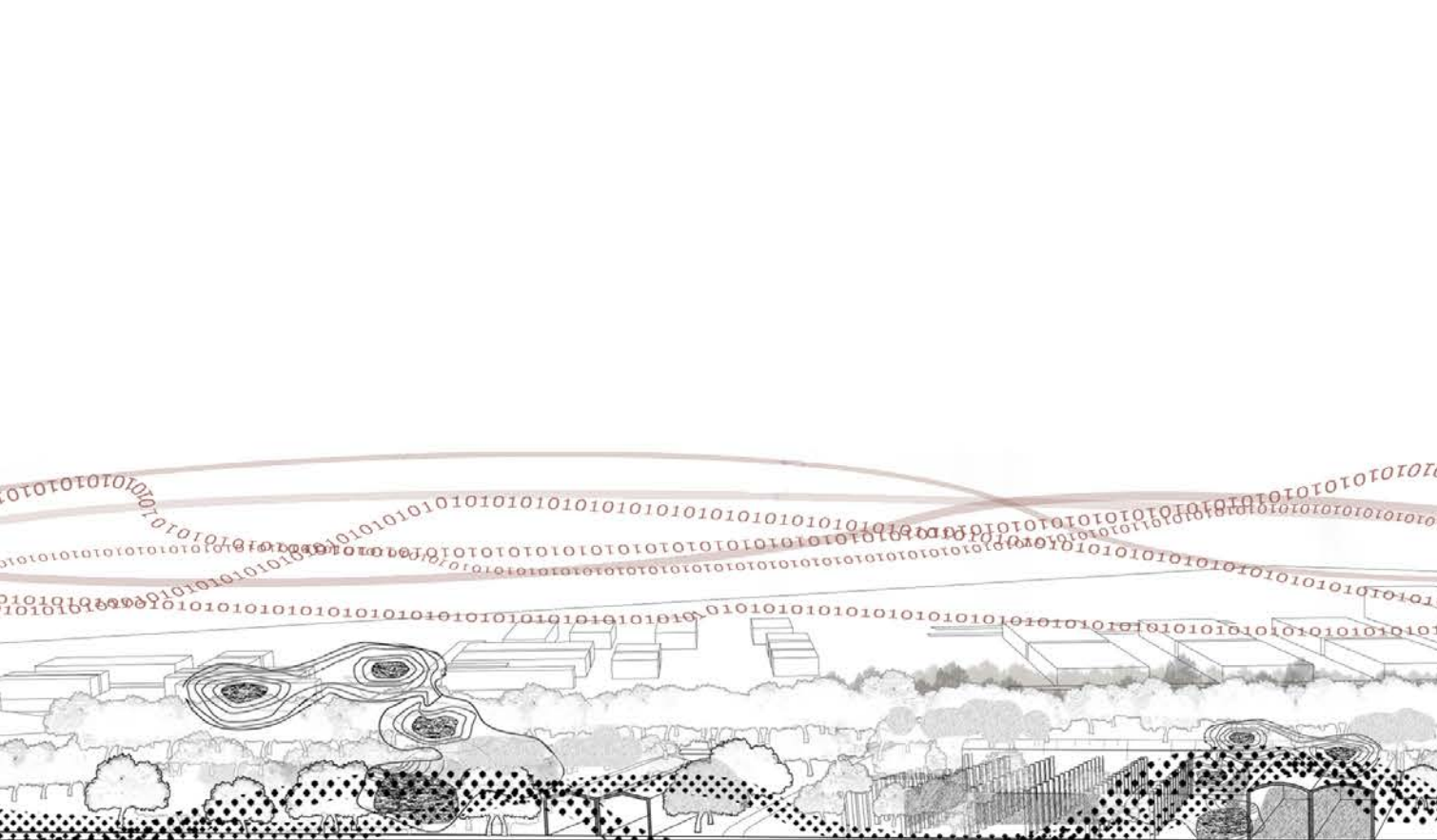
LIMIT BETWEEN CITY AND COUNTRYSIDE

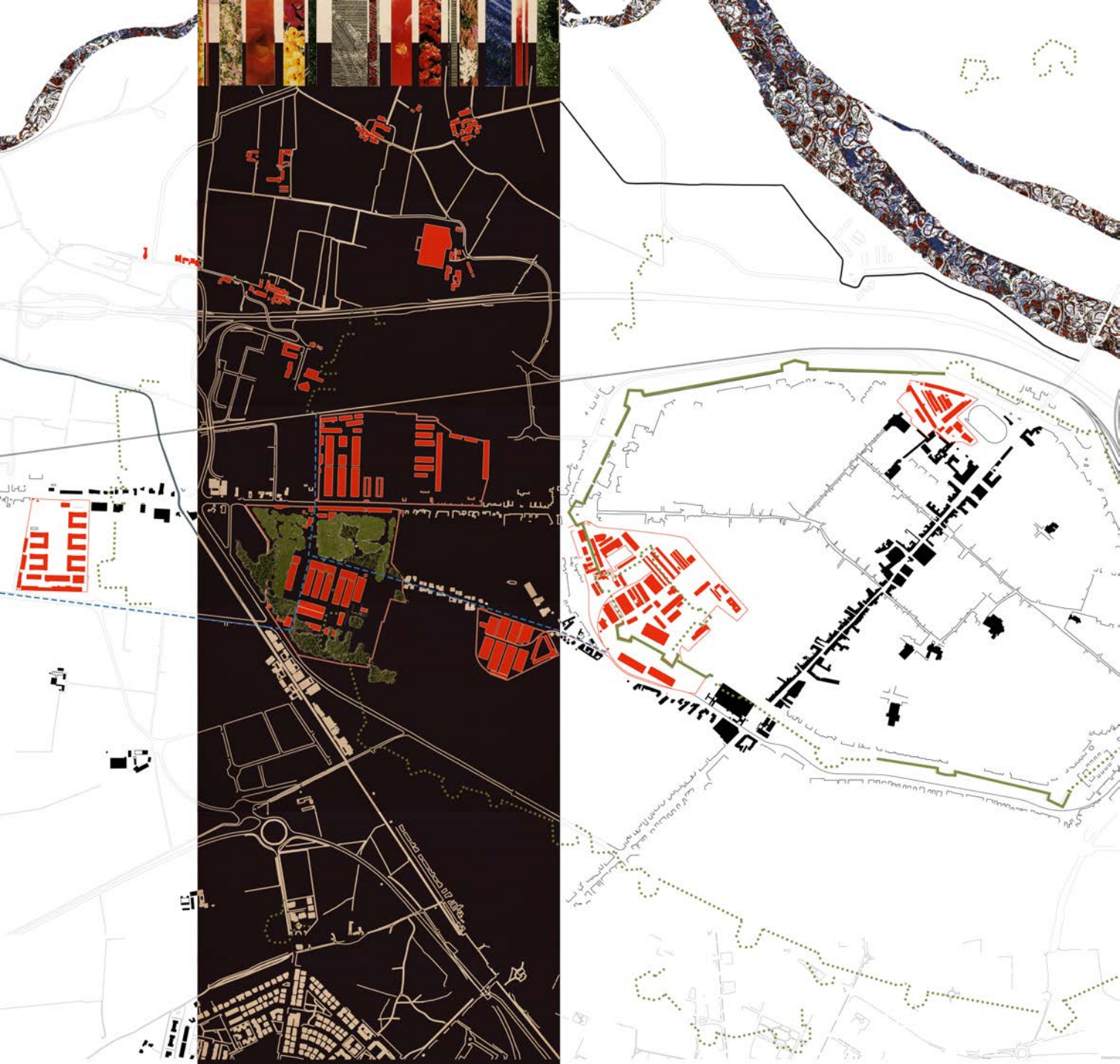


FUTURE CITY



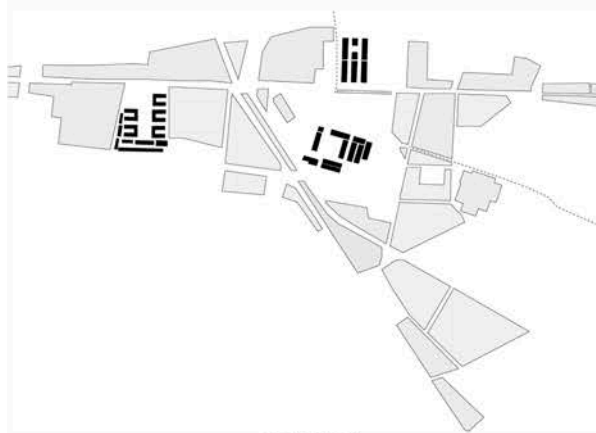




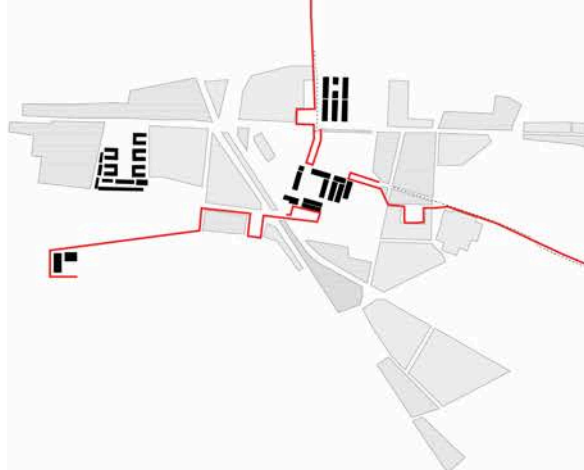


SLOT #3
SITE SCALE

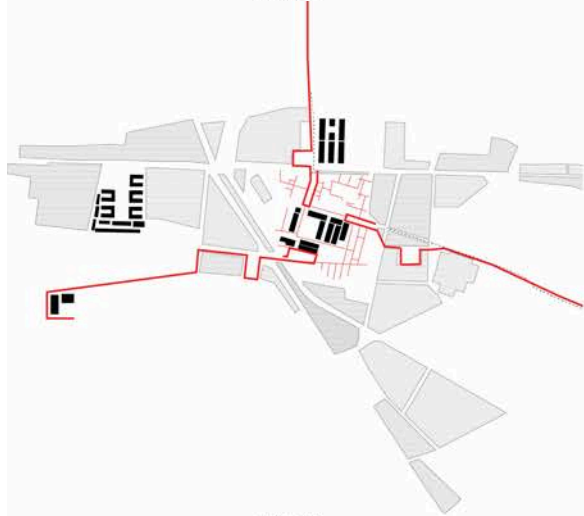
INCREMENT STRATEGIES FOR INDIGENOUS RESOURCES



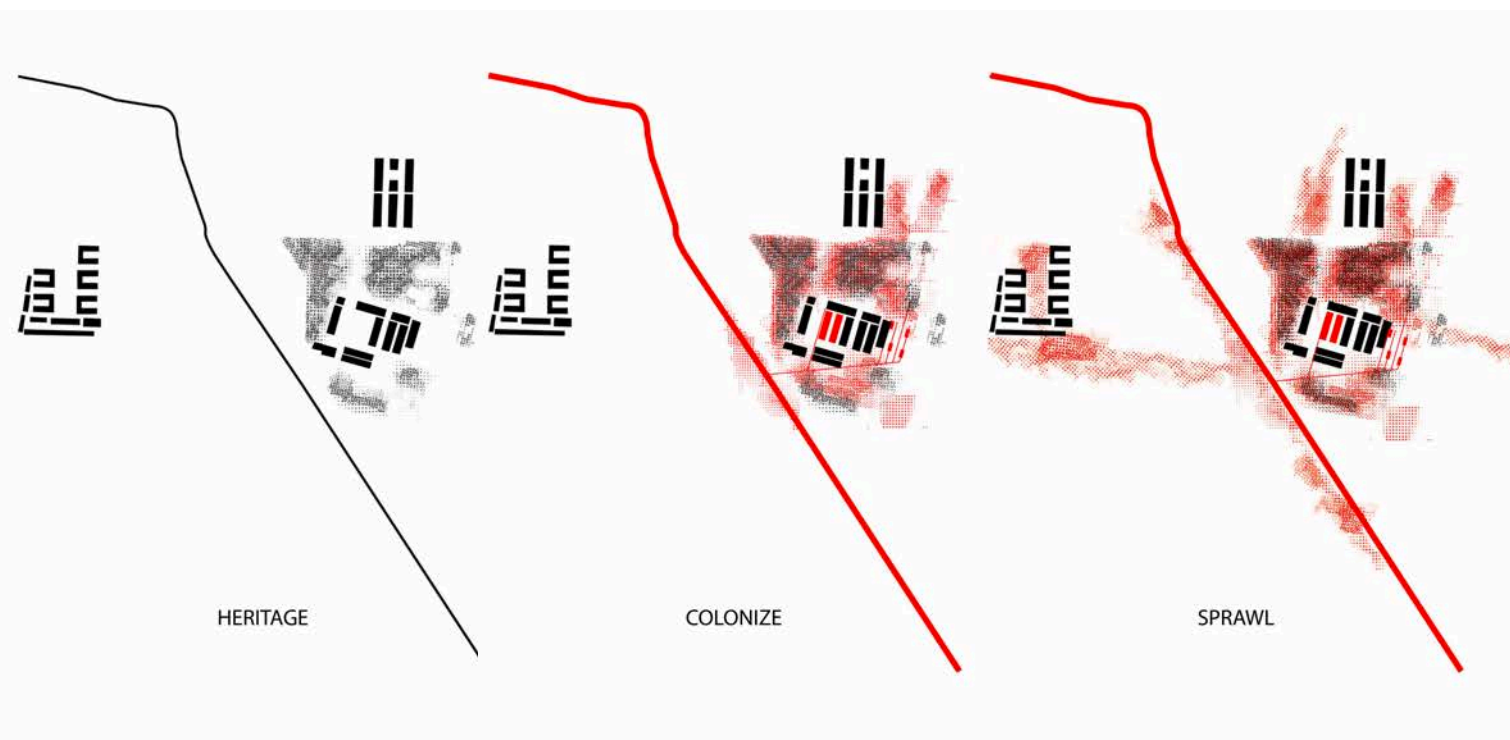
ISOLATION

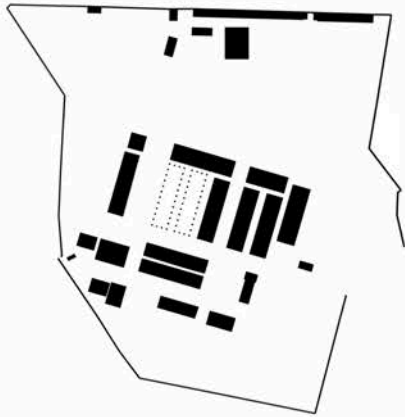


GRAFT

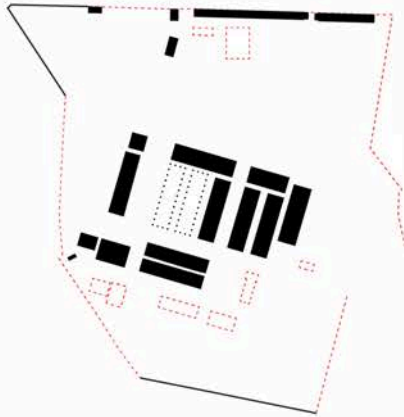


STITCH

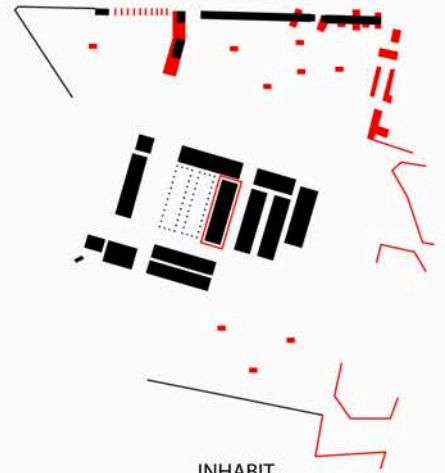




HIDDEN

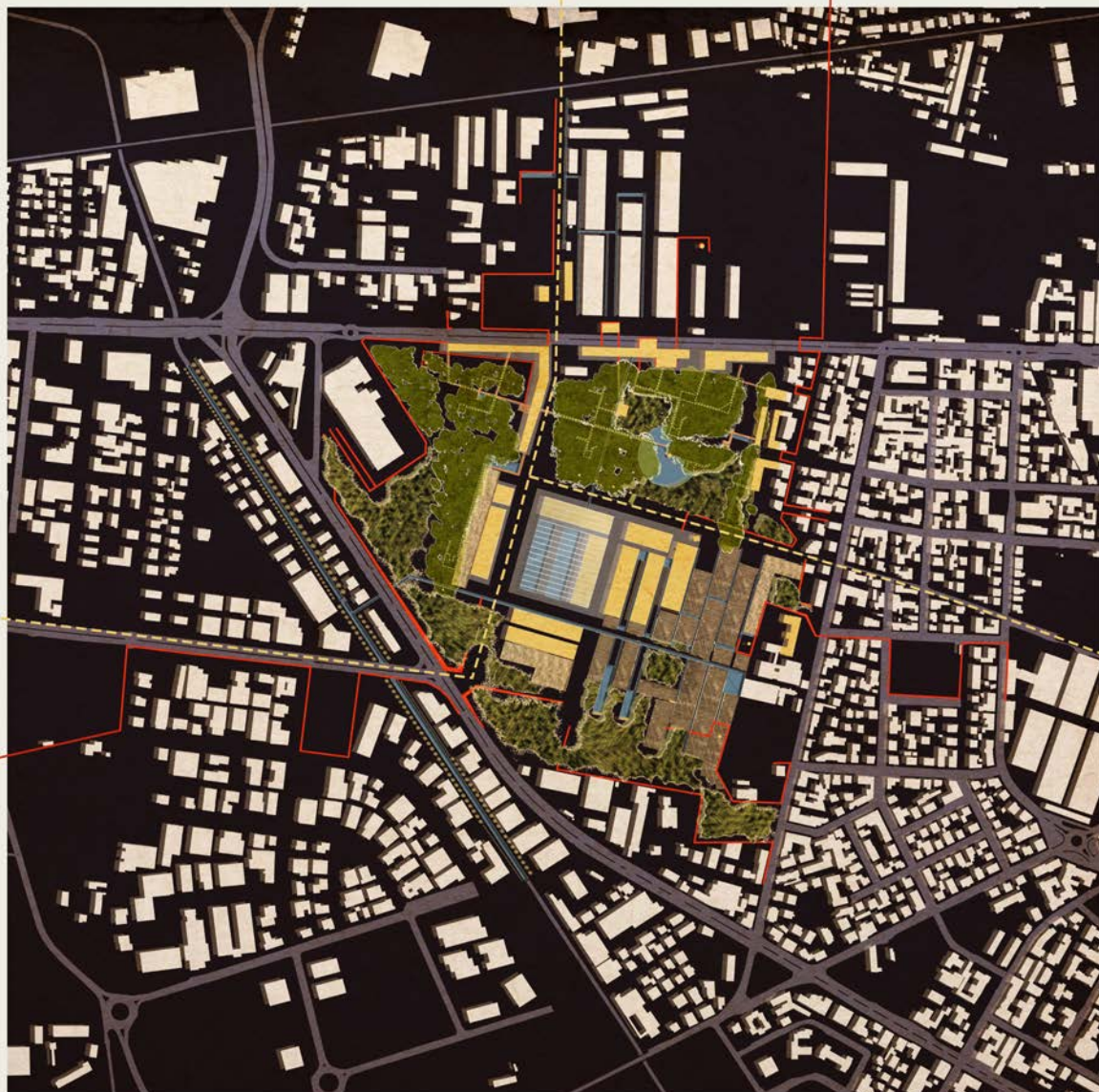


SELECT



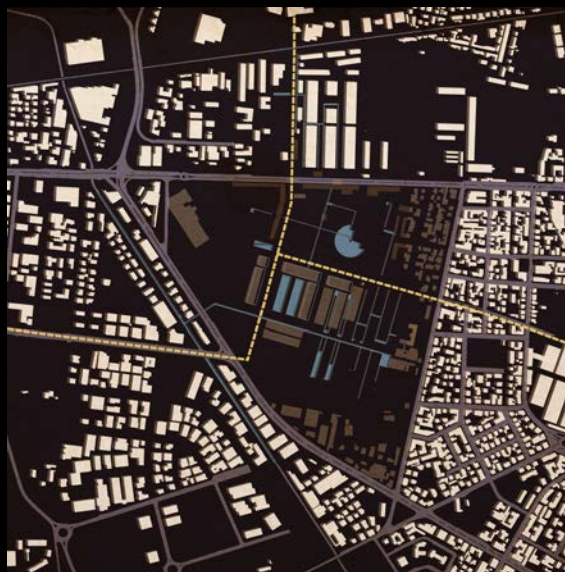
INHABIT

code_PERTITE 2050





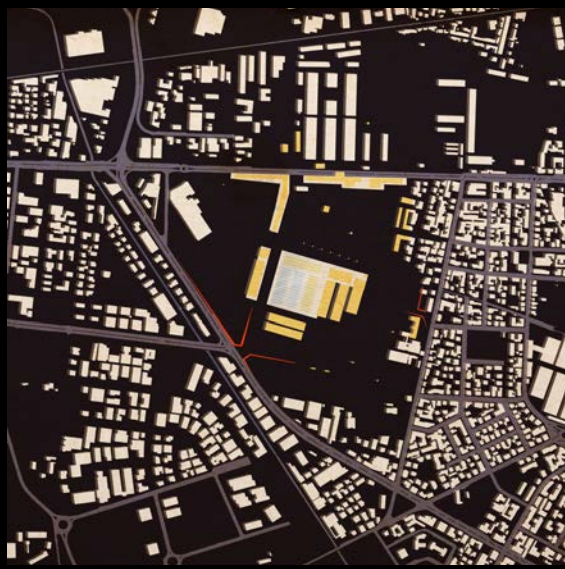
GRAFT pocket park



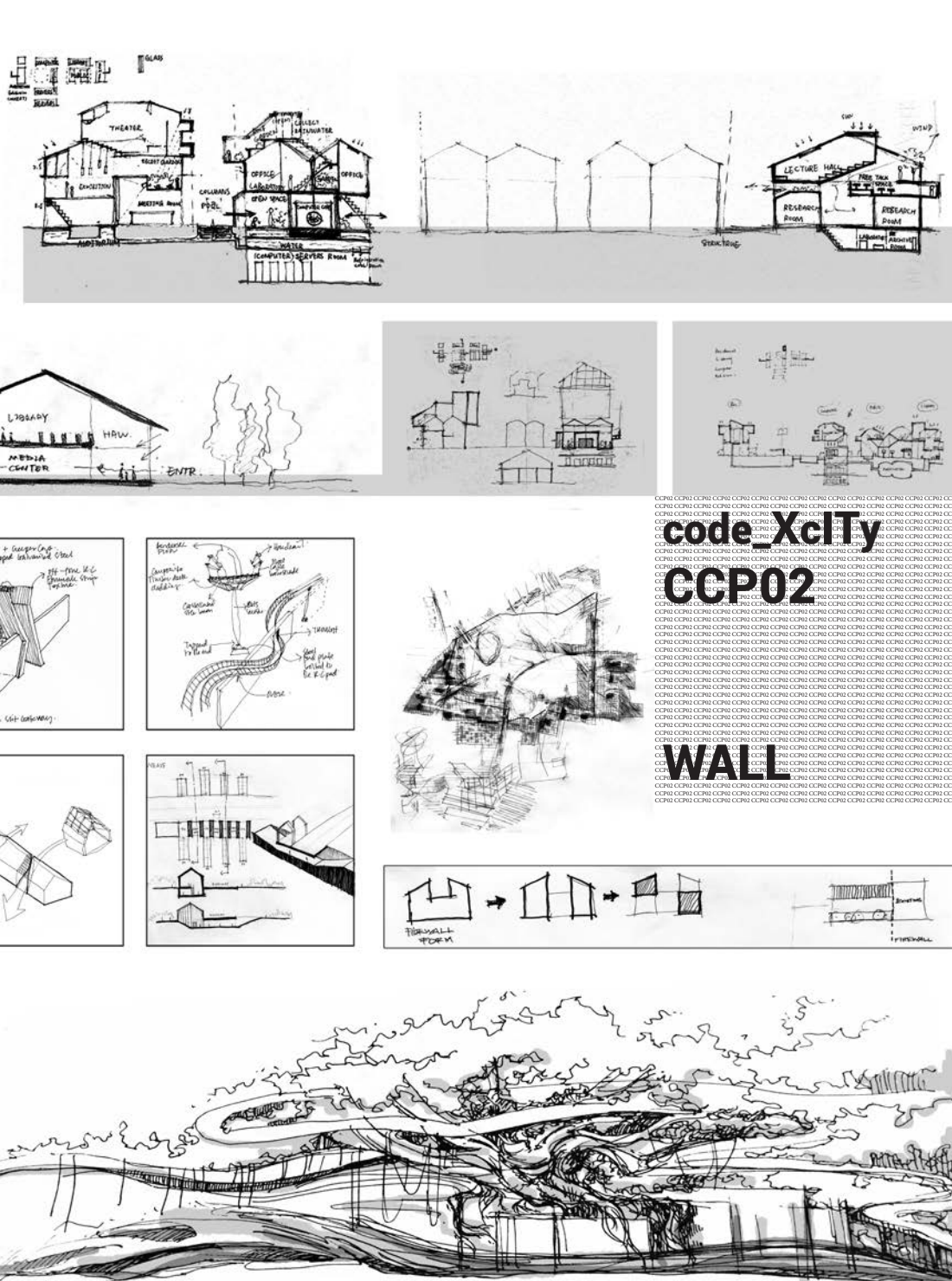
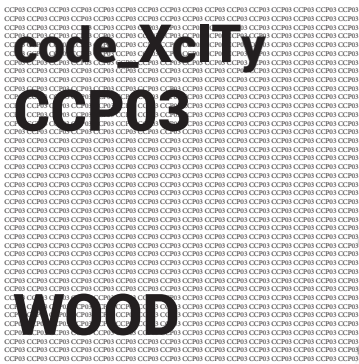
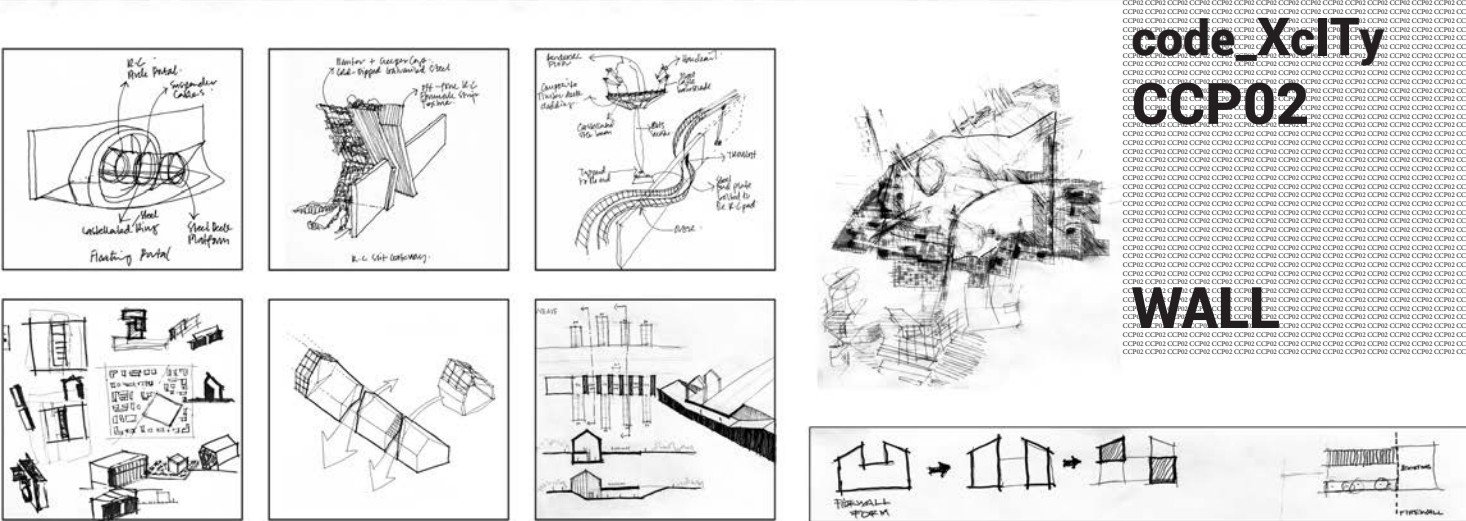
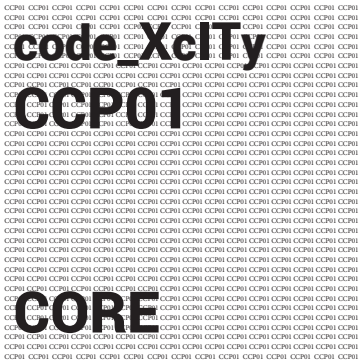
WATER canals and TRAM system



Heritage WOOD/REFORESTATION



Existing BUILDING/PARASITES



WALL



HOUSING AND RETAIL

CORE



SERVER FARM



SUPERCOMPUTER



RESEARCH CENTER

Laboratories

School

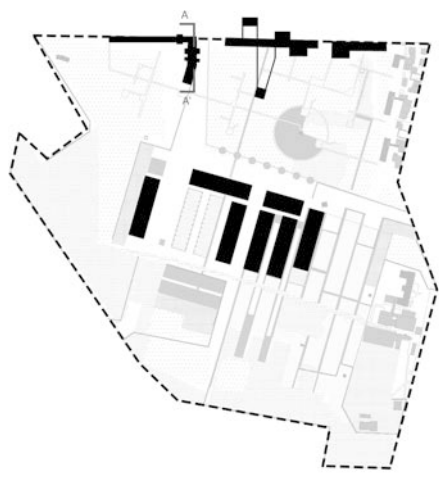
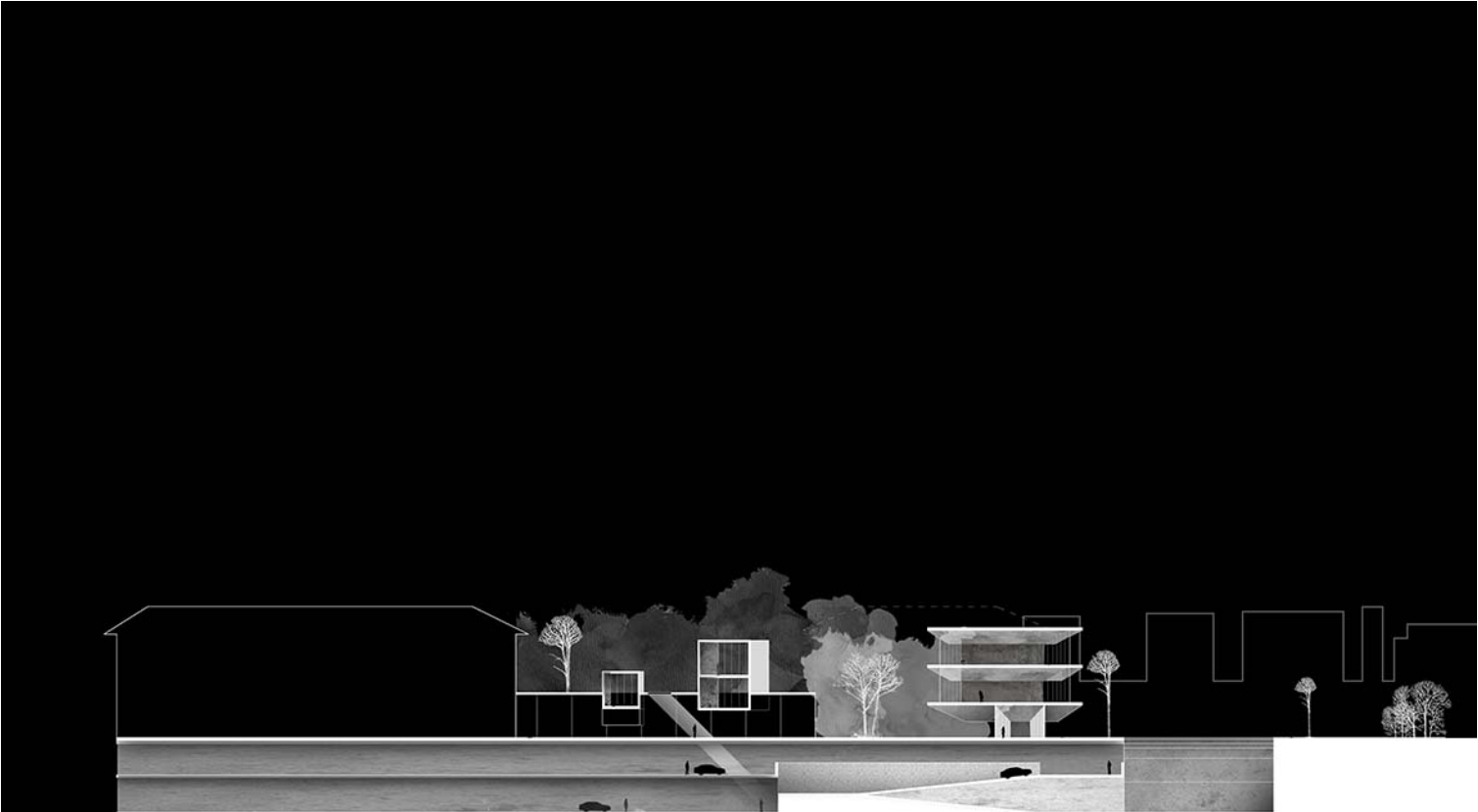
Library

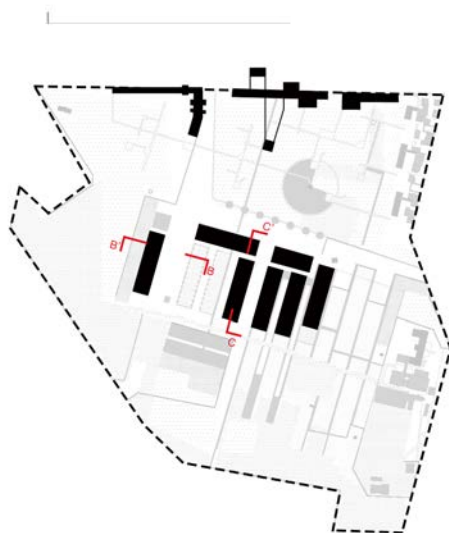
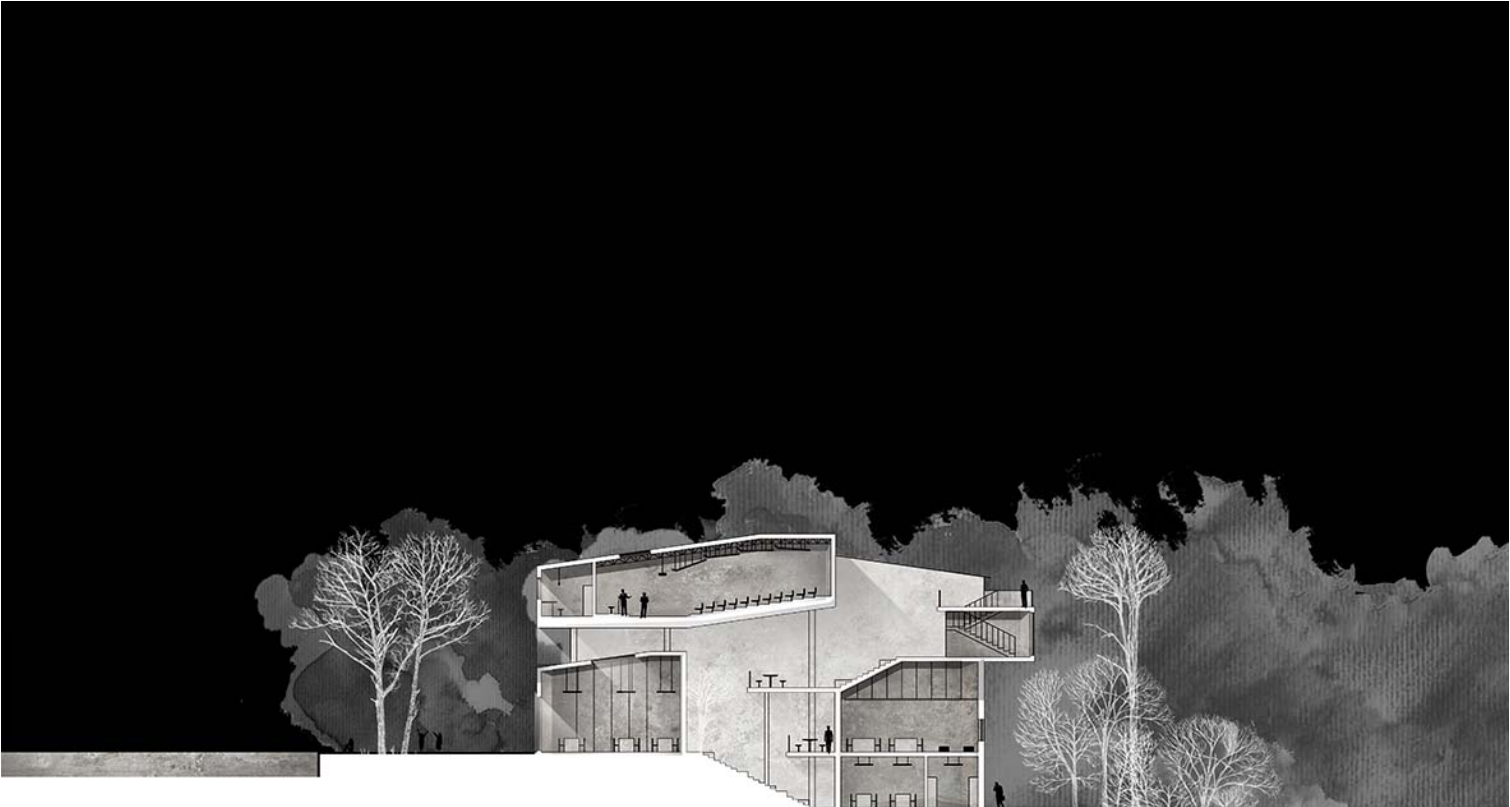
OPEN SPACE

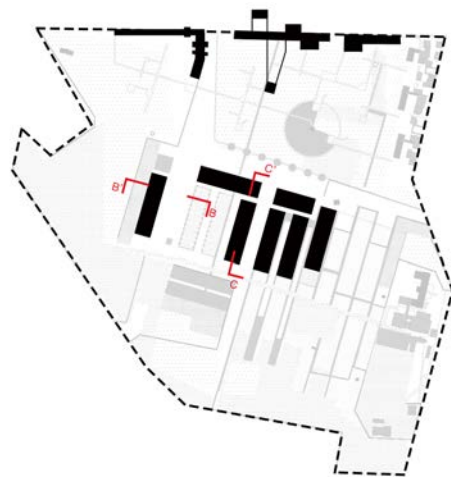
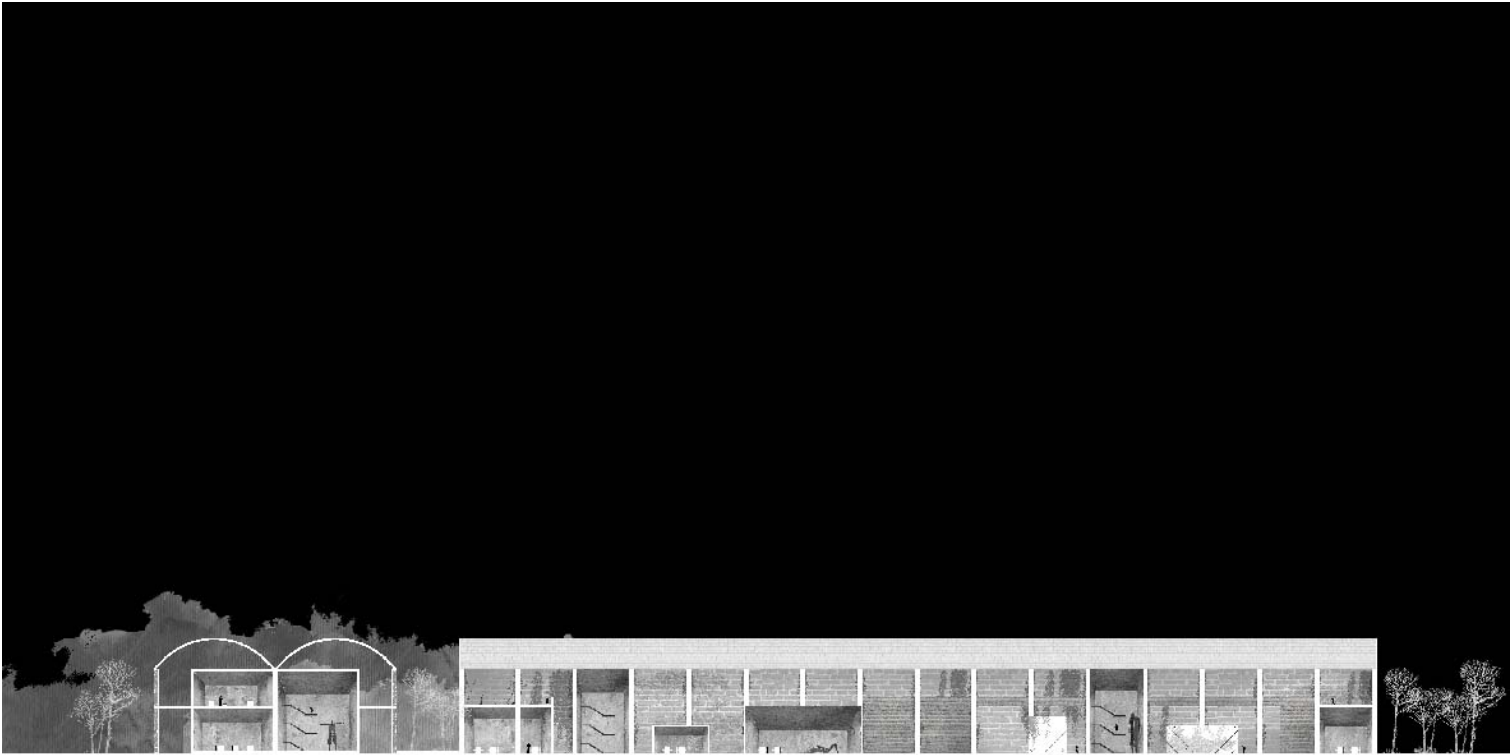


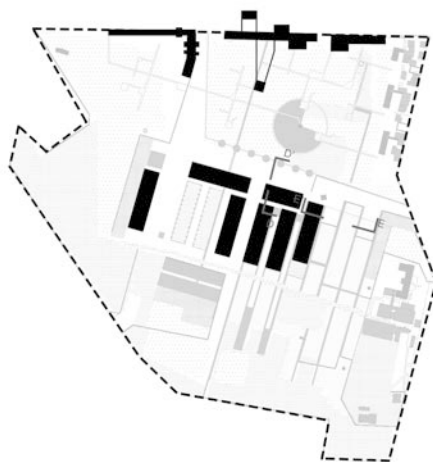
4.0 AGRICULTURE

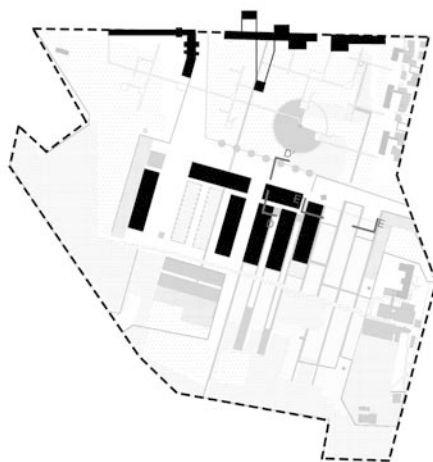
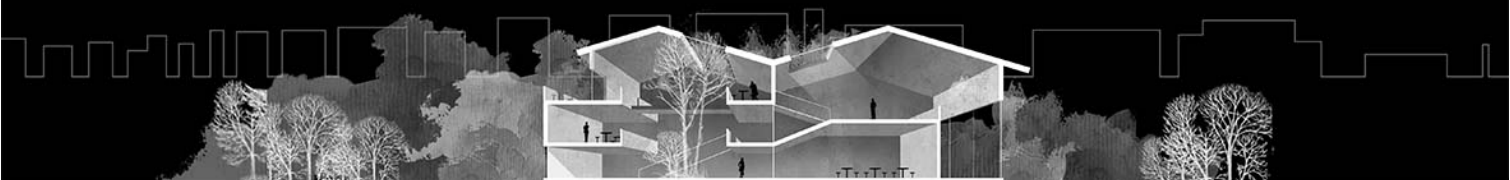




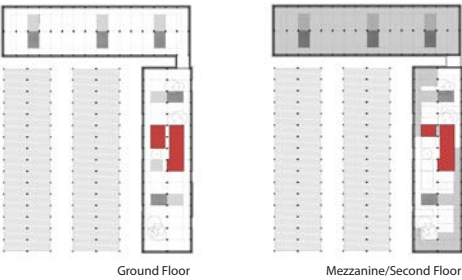




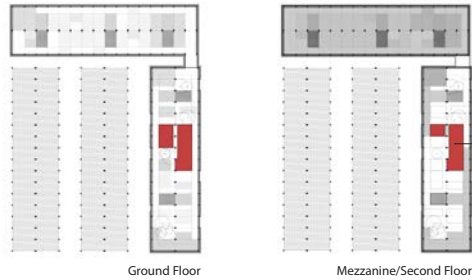




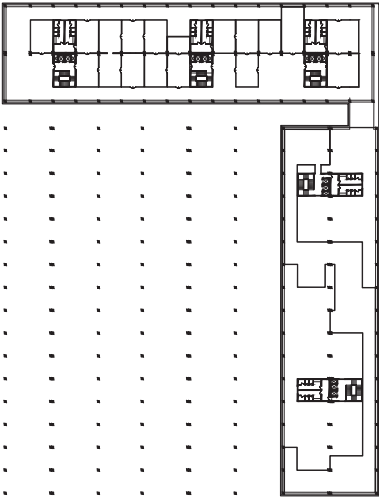
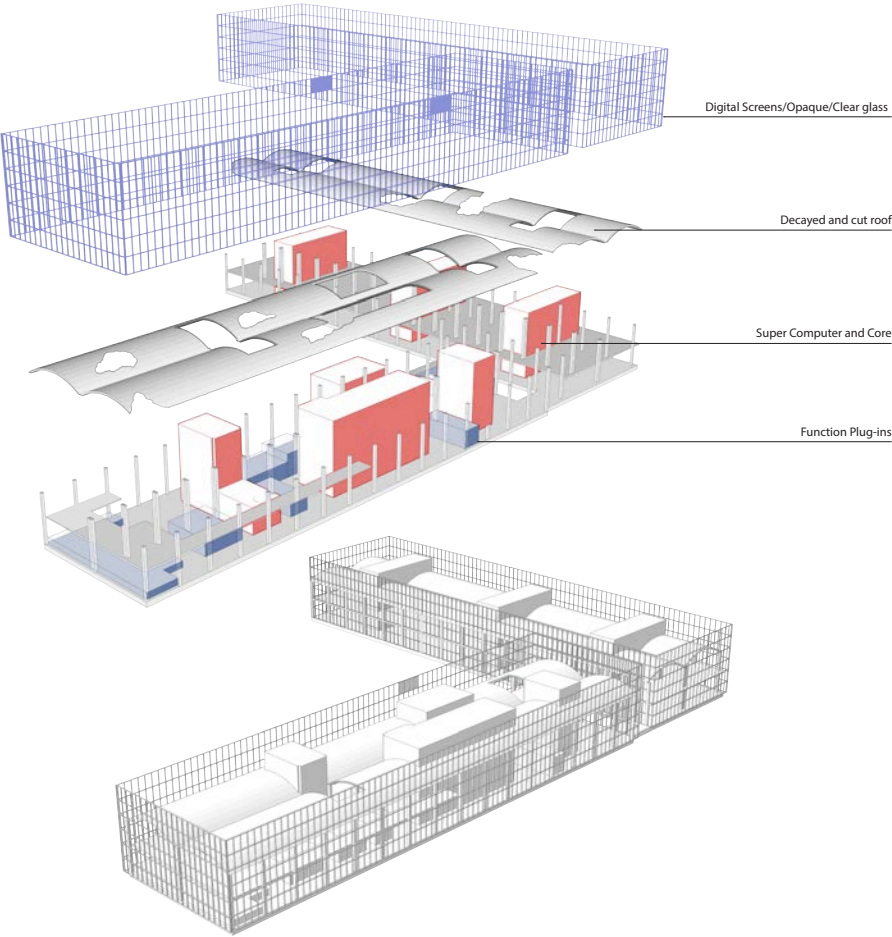
Supercomputer and Circulation Cores
Schematic Plan



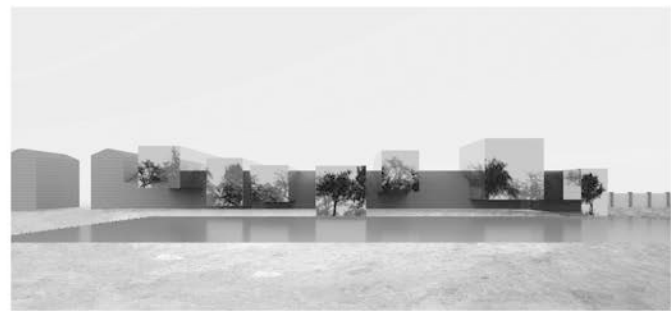
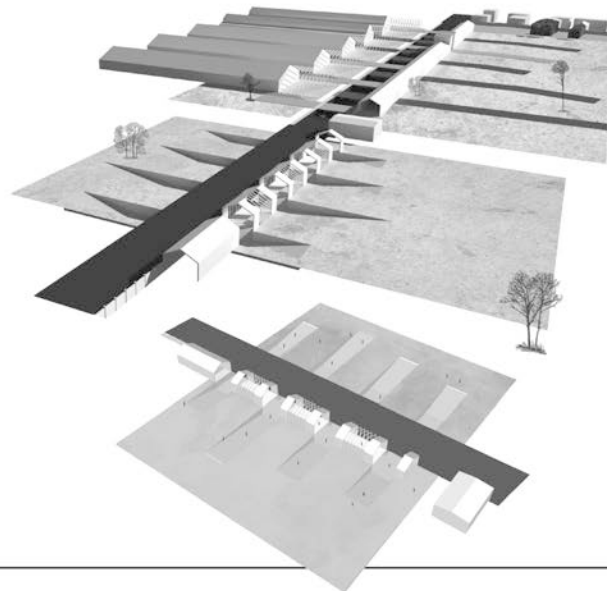
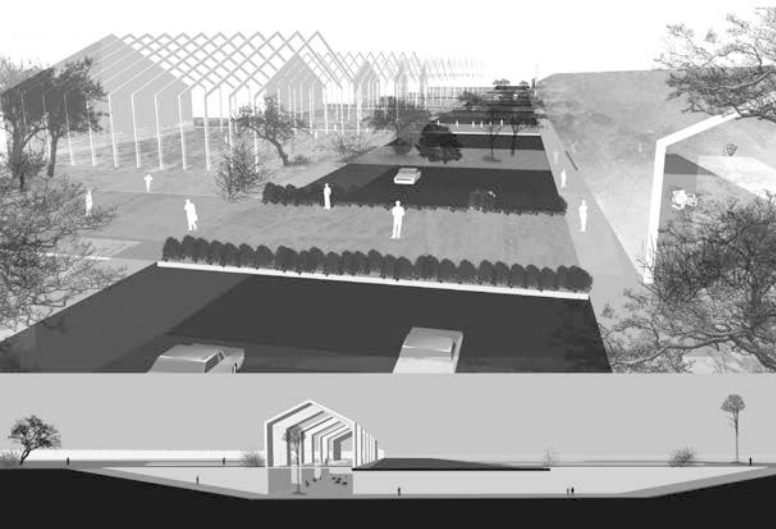
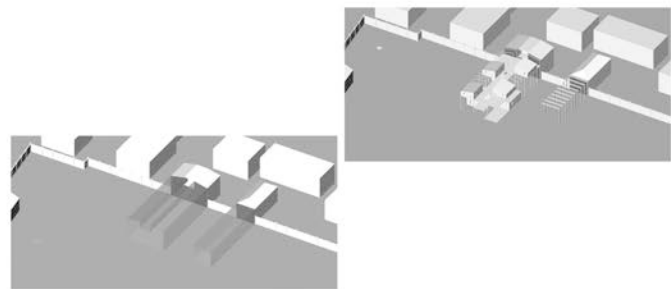
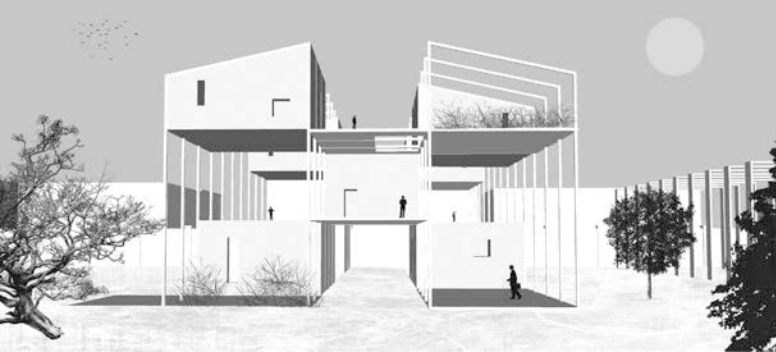
Possible arrangement of Interior "Plug-ins"
Schematic Plan



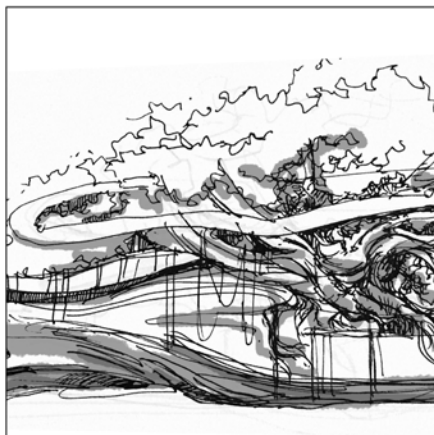
Super Computer and Core

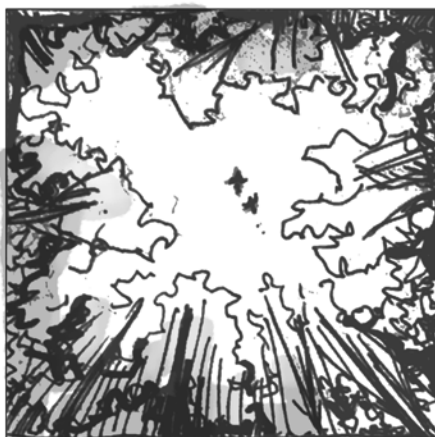


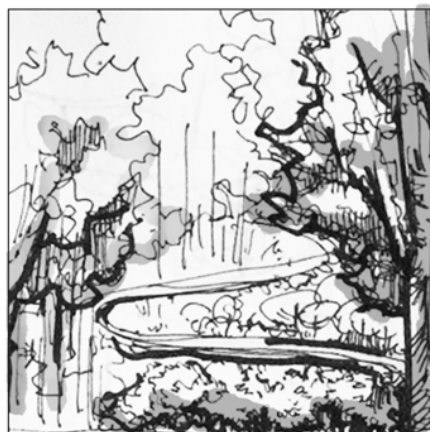
Axonometric of Supercomputer and Research Center



SLOT #4
SITEHumanScale

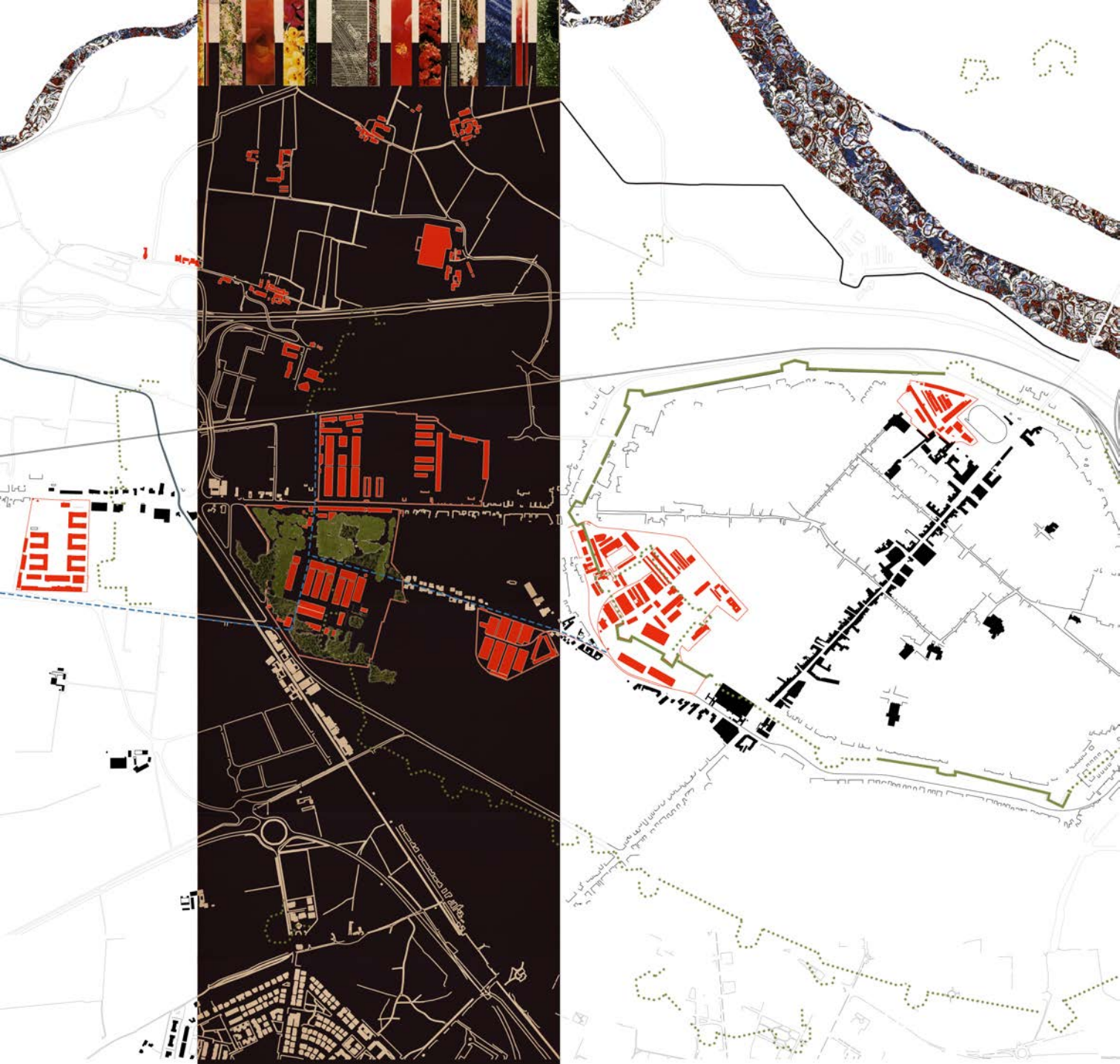








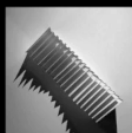




code_PERTITE 2150



TALES / TILES



EXHIBITION



